

Overview of Acute Food Insecurity

Limit overview text to 500 words. Font: 11/13 Myriad Pro light

Summarize the general acute food insecurity situation in the country, including the following aspects:

How severe, how many and when: The number of people facing acute food insecurity in need of urgent action, how severe and for which period. Estimates must be rounded up or down according to standard rounding rules and be consistent with the above table.

Where and who: The most affected areas and populations.

Why: The main factors driving the current and projected acute food insecurity situation.

Puda sam fugitaspit es et est pratia custio odisto te peruptaque sit earum il incim quat opta ipissita sam quo inctemp orumquae. Si dipsunt iumendita autem haribus, que ipsunt ius quibus res rerum nusandi oditatempor sus eicium alic tem volenes namus ne pa peri sinctec tatiam et eumet arcium excea volorro que et laboria nisim num recus ella que num, coreserro voluptium reptati blaccabo. Bera quatur aut dolecto dolloribus ad quos apedit ut facest quunt, occumet re magnat et omni dolupta tiberferio tet pore, ommolenis ad quo beaquo ma quam volupta nitem fuga. Mo

tem andigendi te doluptaquasi vendandem fuga. Edis repra velibus andunt enderia tatqui quia quissim ilique susdandicia sit endignatus, quibus etur, cus molupti que arci odit pedi temquidellent aut laborem nem nonsectus, niasin rero imendi officietur sinti aut eos am et eruptat.

Et volor sitempore latur aut officid magnitaerum essuntium numquisita quianis modi aut maio. Itatusa ndissundit facepuditaes ident quiamus qui net omnisquae natio m iur rerferiam eossunt qui beat audiost dolorruntur alitioria dolest venihit et, sitis eos aciissi consed quatibuscil ides dolo idissit facilliqui comnietur, sum voloria consectore essum volori tet liqui blam fugias nienditios es et doluptatquid qui rerspelecte pa qui non nullatequae ipsam eum hit, corit ipsuntibusa incte sa presciet optatem utas perovid ullique voluptat et acesci.

Bera quatur aut dolecto dolloribus ad quos apedit ut facest quunt, occumet re magnat et omni dolupta tiberferio tet pore, ommolenis ad quo beaquo ma quam volupta nitem fuga.

Bis eicilis qui acearibus rest, sus, et venda debitio di rem qui ilibusam quatem quati tem la nihilignam re que natiore vollab idi volupta temquo quidel ius unt harundis dolore nonsectia adit, unt apis dolutatibus aut quatusc iducia doluptatur sunt.

Omnis denis magnis illam, occumen diciis dolligenis que optam core eatibus, ullatem. Occum everchi cimolor estiatquo viducia verum reria nus dis dis as.

Key Drivers (Myriad Pro Light 9/10 Blurbs - 50 words or less per driver)



Driver 1
Insert a short description and icon for main factors driving the food insecurity situation. Nemperrorro di accusto ratur. Hilitas re velesed min porum re, cupatur. Dem que quis volentenim de quiscimint volorit ut acius dolor. Omnist lam des ide et mod ma doles nonseces et quatiatat quo eosto quo eum sit pro apiendam, sus suntur, occumque.



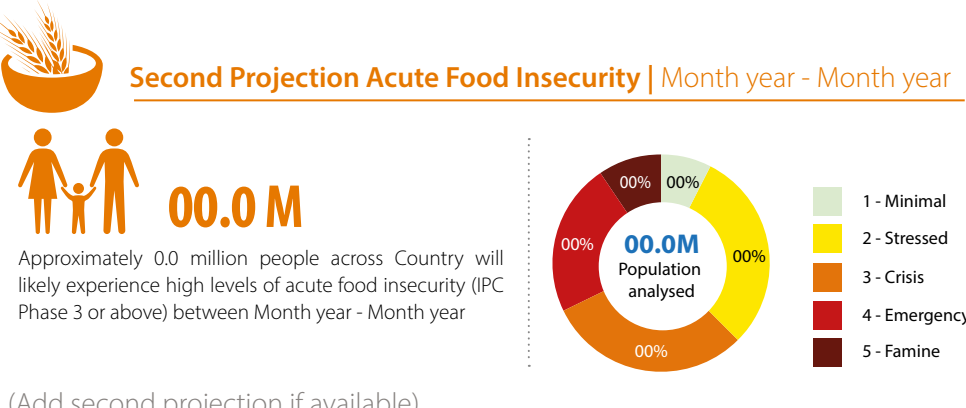
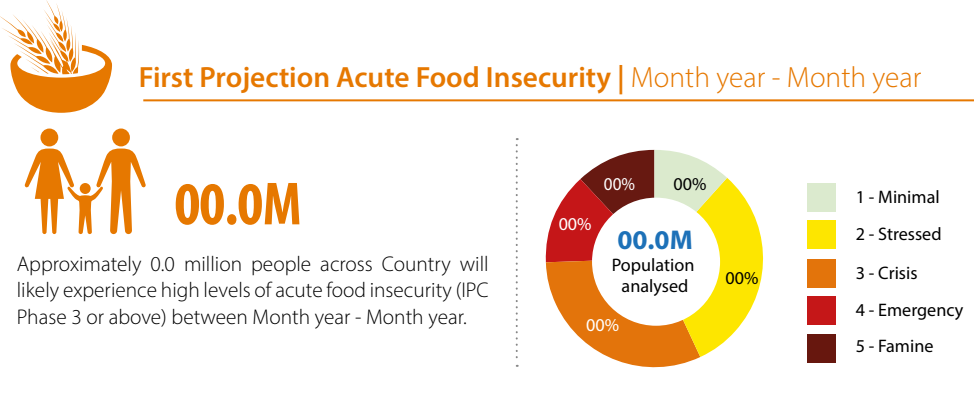
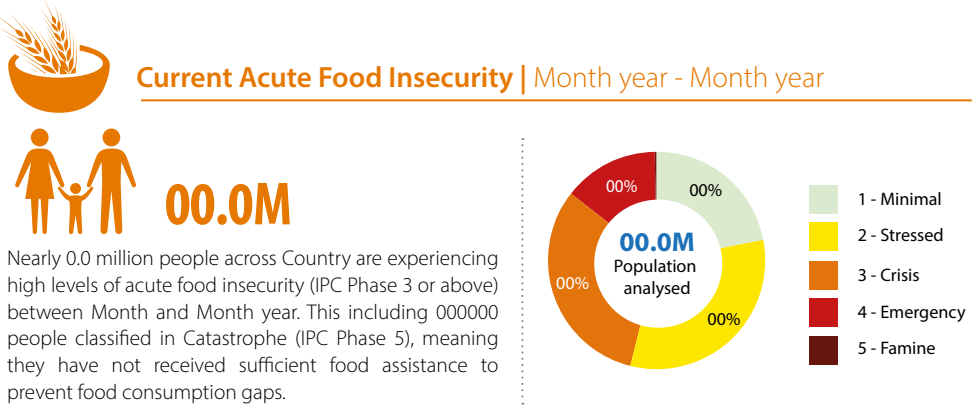
Driver 2
Insert a short description and icon for main factors driving the food insecurity situation. Veremquate excea eos corati vendebissi nos repudiciendi dolor sit, voluptate vel earia doluptae occupientio. Dem que quis volentenim de quiscimint volorit ut acius dolor.



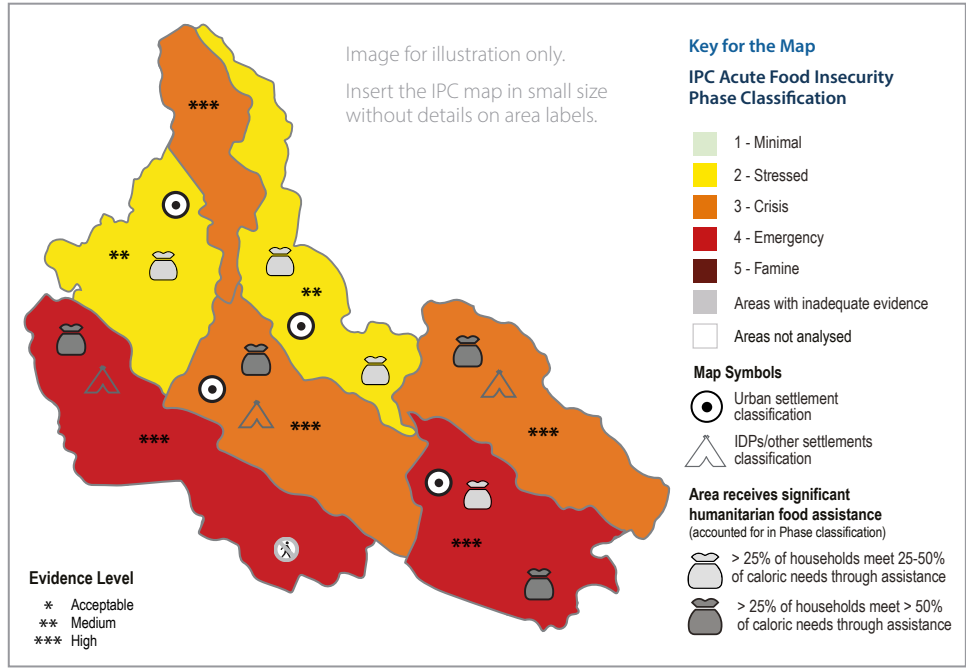
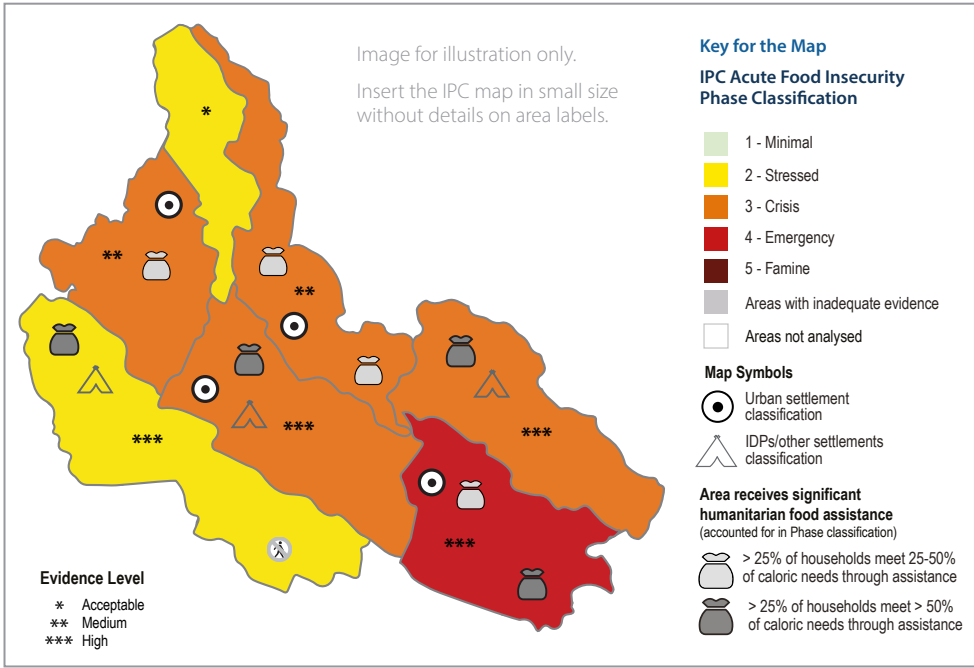
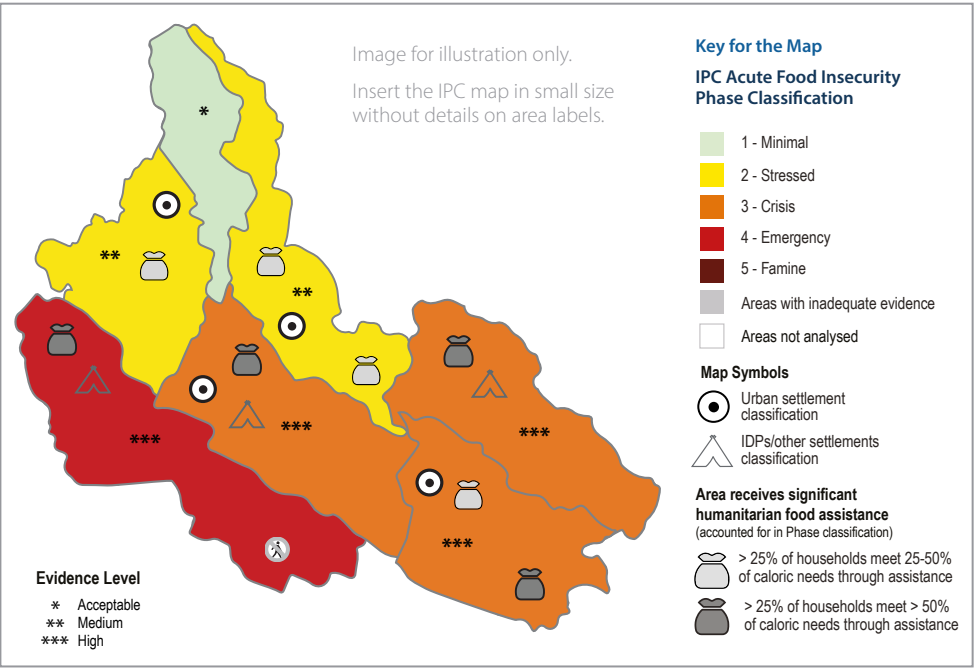
Driver 3
Insert a short description and icon for main factors driving the food insecurity situation. Veremquate excea eos corati vendebissi nos repudiciendi dolor sit, voluptate vel earia doluptae occupientio. Dem que quis volentenim de quiscimint volorit ut acius dolor. Omnist lam des ide et mod ma doles nonseces et quatiatat quo eosto quo eum sit am utaspit ist pro doluptet apiendam, sus suntur, occumque.



Driver 4
Insert a short description and icon for main factors driving the food insecurity situation. Quo intio eum aliquiam nonsernam. Pedisimo vel mod eos el esequam volluptia natur, ommo vollanit et quibus, expelenditas sintcat enimint que as exces.



(Add second projection if available)



IPC Analysis Partners

Insert donor partner logos

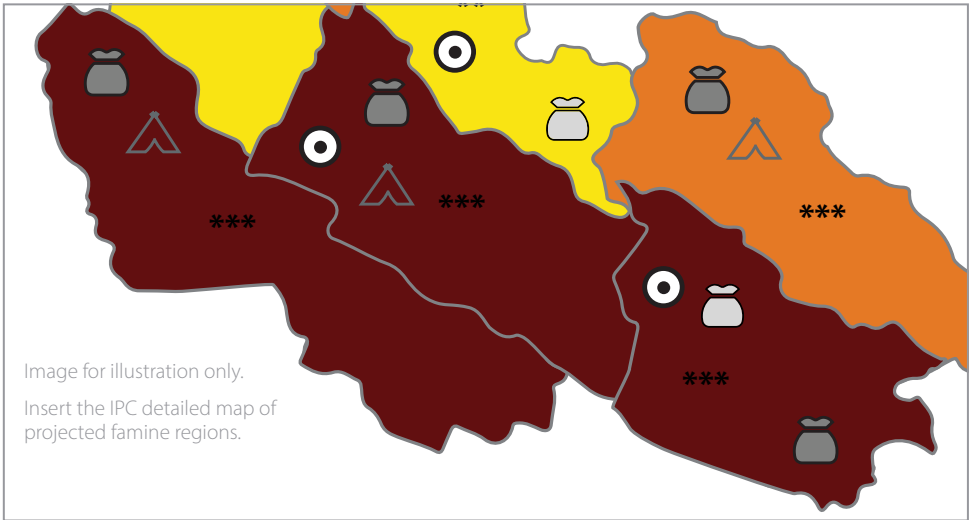


Projected Famine | Month - Month year

Limit text to 150 words. Font: 11/13 Myriad Pro light

Brief overview of projected famine.

Ferspictassi autem. Bus dolorum velecero testendae nes nis aut arum sit eicimus andebite quas excerem rerum natibus si dipiciatem audae sequam qui tesequi offic tem es apelit quamus praepe disimus tiorpore rent verum autecea rcitius escitae rferum voles quam quibus as enim to idest delit odis adiaese este pe porio. Occae perunti odignihit vit, offictaquam que dolessimint elit et aut pera doluptatum am voluptas idempostecum faccum in corem est videm sam quossit atatianda dolorit, solupta tassumquas as dolorro magna.



Why famine is most likely to occur



Reason 1

Insert a short description and icon for main factors why famine would occur. Font Myriad Pro Light 9/10. Limit words to 50 or less. Idusantistion natios magniet velluptatur arum vel mi, ut lantoritium atem es dersped magnimo luptat occum repudae ne vero quia.



Reason 2

Insert a short description and icon for main factors why famine would occur. Font Myriad Pro Light 9/10. Limit words to 50 or less. Idusantistion natios magniet velluptatur arum vel mi, ut lantoritium atem es erspienimos reram, optatius quis earibus as vollar quatem dersped magnimo luptat occum repudae ne vero quia.



Reason 3

Insert a short description and icon for main factors why famine would occur. Font Myriad Pro Light 9/10. Limit words to 50 or less. Idusantistion natios magniet velluptatur arum vel mi, ut lantoritium atem es erspienimos reram.



Reason 4

Insert a short description and icon for main factors why famine would occur. Font Myriad Pro Light 9/10. Limit words to 50 or less. Idusantistion natios magniet velluptatur arum vel mi, ut lantoritium atem es dersped magnimo luptat occum repudae ne vero quia.

The IPC Famine Review Committee (FRC) reviewed the current and projected classifications for (insert areas), explanation of the classifications with dates and sources. Myriad Pro regular 9/10. Limit text to 120 words or less.

Itium sollaborior sequo to qui non et ex et laboresto cullenem fuga. Nam nosa porum ernatur re num fugiandernat elest, conectas dolorit atemporepere aspero iumenite volest at. Emquunt, ea sedi suntia num rest ex ent aliati temo minus parum excepel et quaecturitae verfero es earum iditibus, cus serepudi aceaquo eatissin re velique labo. Tiam earciis ex eniendent eumquatem et hitem invellu ptium, commime tureici mporror rehenis doloreperunt estent. Et isciatur sum consequis ipidelles et venis ut et into blabo. Orecto vent fuga. Ugिताe simusan ihitibusa iur as estia.

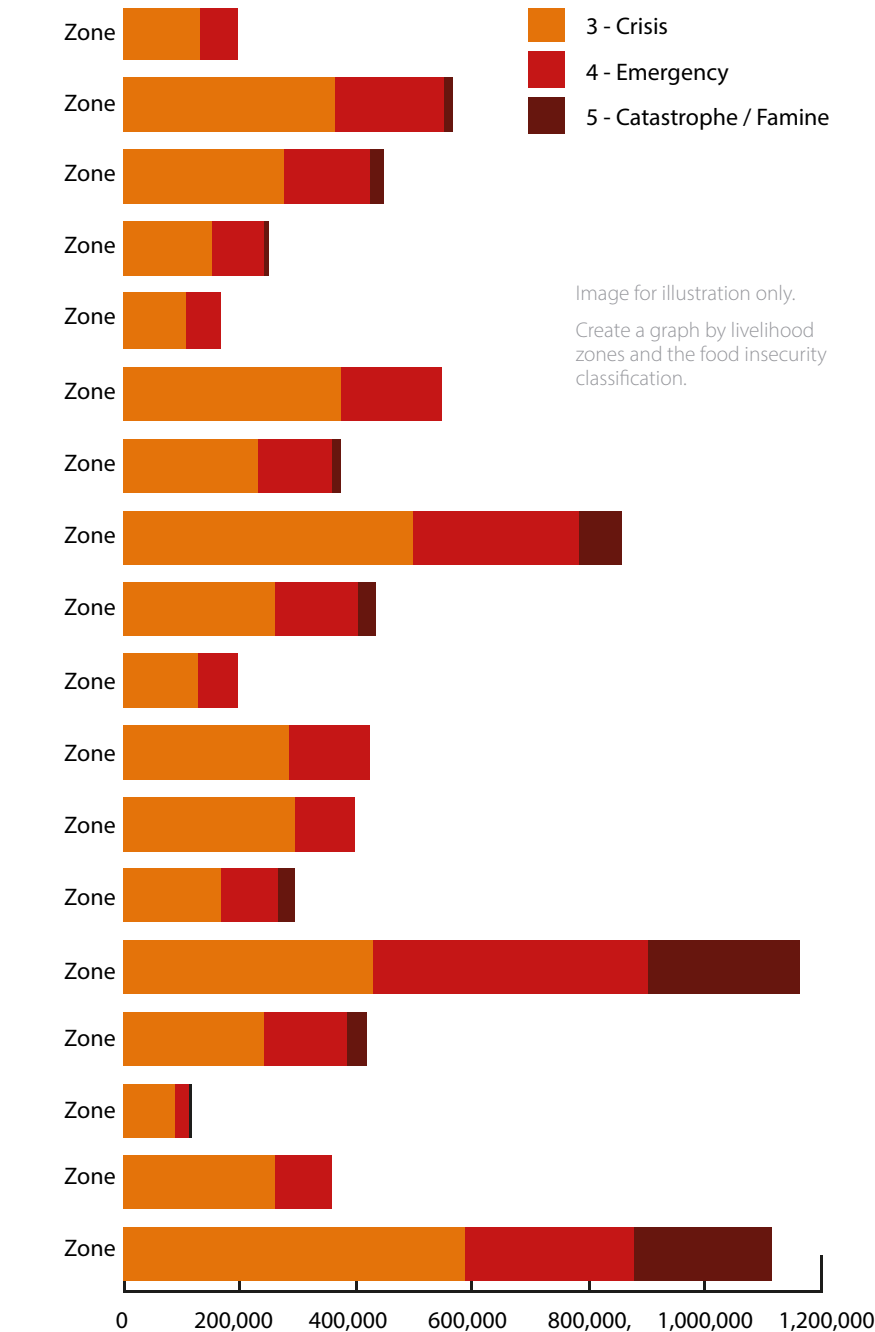
Projected Acute Food Insecurity by Region | Month - Month year

Limit text to 150 words. Font: 11/13 Myriad Pro light

Summarize the acute food insecurity situation in regions with severe AFI. How severe, how many and when, where and who, why? The main factors driving the acute food insecurity situation.

Ad escient volest, solore consequia doluptae eum, aut rerumque delesci militium inis sus ut porem estem que landebi scipsan iminvel ibusaetur sum, coreritium faceribus si aut qui aute iureris maiore parum reprat quoditature autas ne et dolectore minctaesto qui blaut eum quid quiberf errorere nectae voluptiat alic tempor mint ulpa velecep tatium int eos cumquam fugitat emoluptatem fugitio ssequi tem fuga et am, odici con nitatium abo. Ossum quiam, pos excesequis sam sitas apictur, que il mincto tem rescia sus nihit ulpa doluptus. Ore dignati antempo reicieni omnimi, et harum restem aborrum ium faccum aut moles a culluptat.

Projected Acute Food Insecurity by Livelihood Zone | Month - Month year

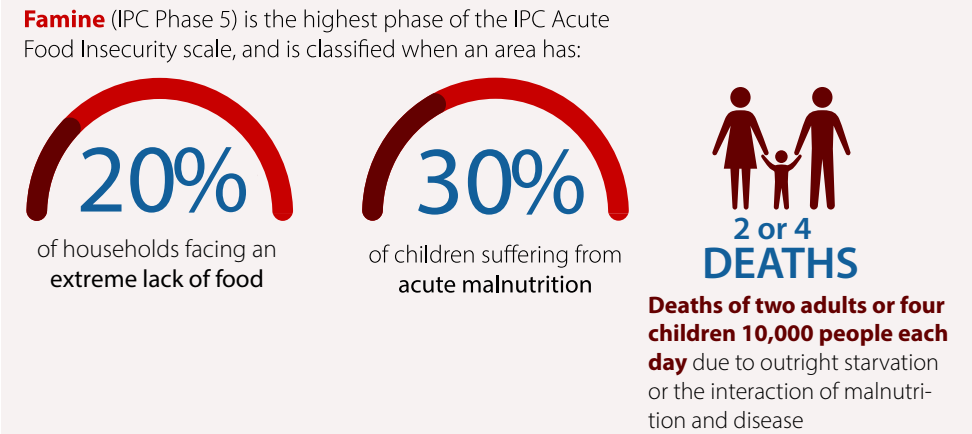


What is Famine?

The Integrated Food Security Phase Classification (IPC) defines famine as an extreme deprivation of food. Starvation, death, destitution and extremely critical levels of acute malnutrition are or will likely be evident. The IPC plays a critical role in identifying famine conditions, and informing the response needed to save millions of lives. The IPC is now the primary mechanism the international community uses to analyse data and arrive at a conclusion whether famine is happening or likely happening in a country. Analyses are based on evidence gathered by a wide range of partners and multistakeholder technical consensus. When a Famine IPC Phase 5 classification is concluded in the projection period, there are concrete indications that Famine will occur if conditions evolve as expected and humanitarian assistance is insufficient to prevent it.



When is Famine Classified?



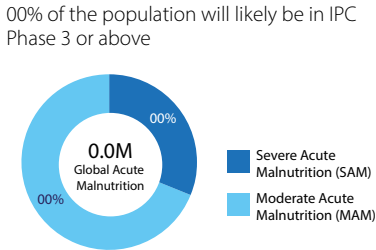
About the IPC Acute Food Insecurity Scale

The IPC Acute Food Insecurity scale has become the global standard for the classification of acute food insecurity. It is used principally to inform decisions on resource allocation and programming globally and within countries, especially for countries experiencing recurrent or protracted food crises.

Phase 1 None/Minimal	Phase 2 Stressed	Phase 3 Crisis	Phase 4 Emergency	Phase 5 Catastrophe/ Famine
Households are able to meet essential food and non-food needs without engaging in atypical and unsustainable strategies to access food and income.	Households have minimally adequate food consumption but are unable to afford some essential non-food expenditures without engaging in stress-coping strategies.	Households either: • have food consumption gaps that are reflected by high or above-usual acute malnutrition; or • are marginally able to meet minimum food needs but only by depleting essential livelihood assets or through crisis-coping strategies.	Households either: • have large food consumption gaps that are reflected in very high acute malnutrition and excess mortality; or • are able to mitigate large food consumption gaps but only by employing emergency livelihood strategies and asset liquidation	Households have an extreme lack of food and/or are unable to meet other basic needs even after full employment of coping strategies. Starvation, death, destitution and extremely critical acute malnutrition levels are evident. (For Famine classification, an area needs to have extreme critical levels of acute malnutrition and mortality.)



About 00.0 million children aged 6-59 months in Country name will likely suffer from acute malnutrition through Month year and will need treatment. About 0.00 million pregnant or breastfeeding women (PBW) will likely suffer acute malnutrition in the same period.



Overview of Acute Malnutrition

Limit overview text to 250 words. Font: 11/13 Myriad Pro light

Summarize the general acute malnutrition situation in the country, including the following aspects:

How Severe, How Many and When: the number of acutely malnourished children in the current period. Indicate how severe the situation is for the projected period. Estimates must be rounded up or down according to standard rounding rules and be consistent with the above table.

Where: the most affected areas and populations.

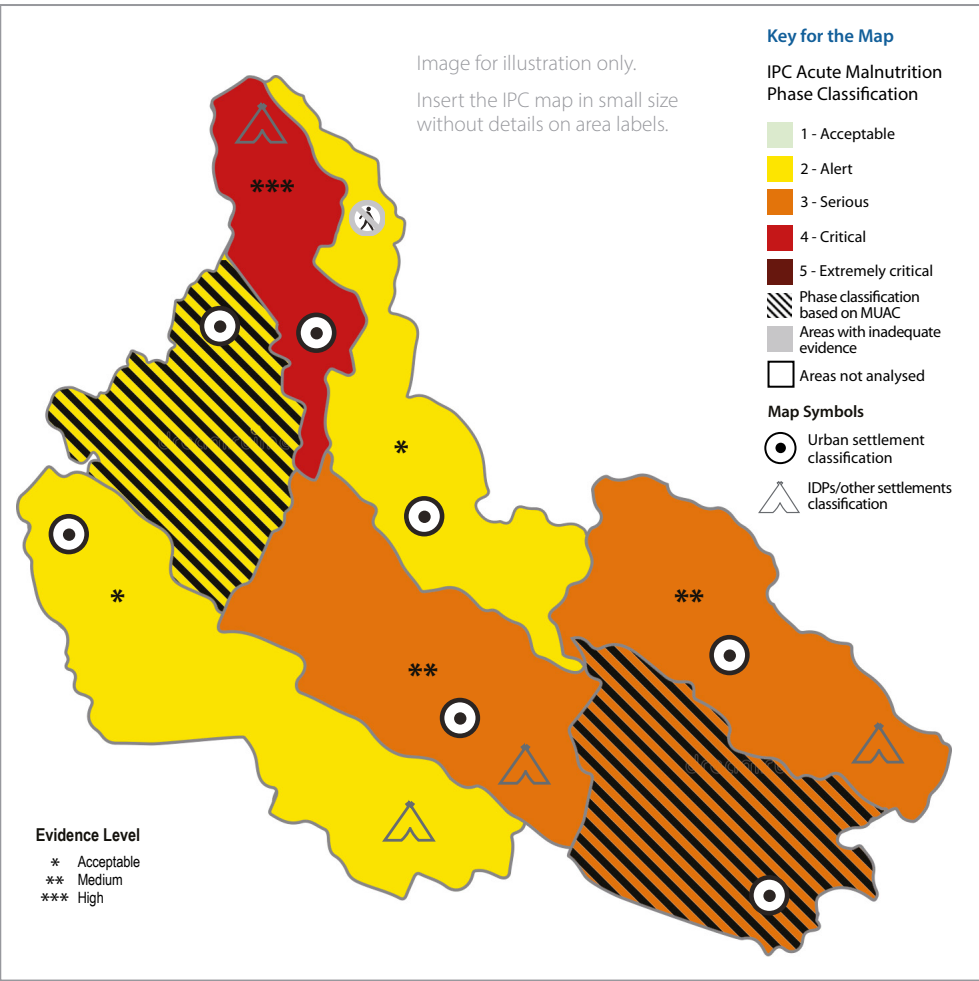
Why: the main factors driving the acute malnutrition situation.

Et, accum volla con remquuntio. Geneculpa essi deliquid eum essinctorio. Unda dolor raeri dolupta venducim que nonesequo modia con pro ea quisqui optatis tenimporpos sequame lacipsanda voluptitibus, vera senihil endiste ne natibus ellat endis etur, sam, aut endi alitatis explit, nest que quia dus eveless itaturepudi ut quam que eossum que voluptae voles dempore natoru menturit et officae platemodit eossi ipsande et arionet il ipis dolupic te valorita iunditiam faceperferae eum dolorem porescit adia cum re niminvenit voluptat eosande sequame lacipsanda voluptibu. Ma ium idel ium faccument et unt voluptiam exeratem latent, voluptatium atem. Et alitas voloremquate pe rest dolore venem. Tiam, sitatiumquam lis as in num quatur simus veris dolum que niment ommolup tatatiur ape non earitature es di de nonsequasped quas suntur.

Contributing Factors (Myriad Pro Light 9/10 text - 50 words or less per factor)

- Contributing factor 1**
- Insert a short description and icon for main factors contributing to acute malnutrition. Quo intio eum aliquiam nonsernam.
- Contributing factor 2**
- Insert a short description and icon for main factors contributing to acute malnutrition. Hillitas re velesed min porum re, cupatur re volut quo intio eum aliquiam nonsernam. Veremquate excea eos corati vendebissi nos repudiendi dolor sit, voluptate vel earia doluptae occupientio. Dem que quis volentenim de quiscimint volorit ut acius dolor.
- Contributing factor 3**
- Insert a short description and icon for main factors contributing to acute malnutrition. Intio eum aliquiam nonsernam. Pedisimo vel mod eos el esequam volluptia natur, ommo vollarit et quibus, expelenditas sinctat enimint que as exces.
- Contributing factor 4**
- Insert a short description and icon for main factors contributing to acute malnutrition. Veremquate excea eos corati vendebissi nos repudiendi dolor sit, voluptate vel earia doluptae occupientio. Dem que quis volentenim de quiscimint volorit ut acius dolor.

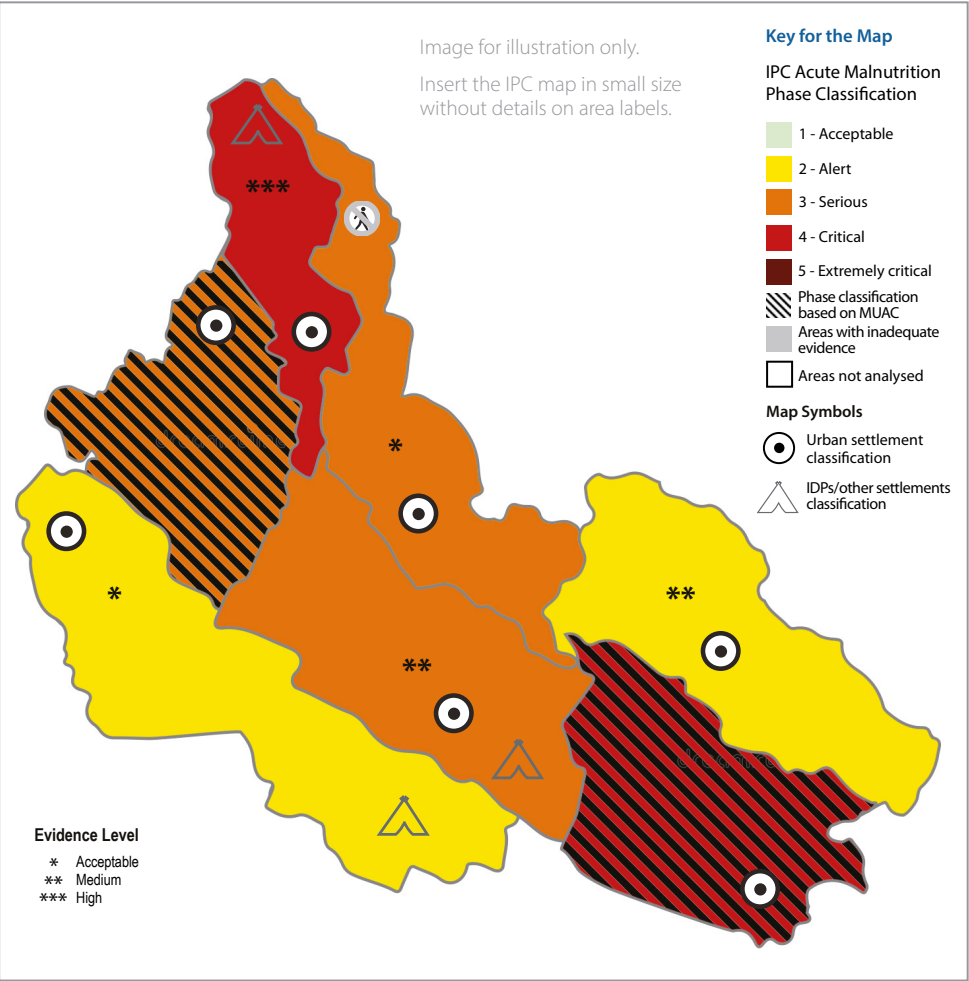
Current Acute Malnutrition | Month year - Month year



Recommended Actions (Limit text to 50 words per action. Font: 9/10 Myriad Pro light)

- Recommended action 1**
- Insert a short description and recommended actions driving the food insecurity situation. Ebisseratio. Facculla sitasperum dolorios idus ea doluptur? Evenite mporiam nisquas est il minulpa il id es ipsaecae la volore, sequatur apiti ius et es eaturesequam sime esti, comnis imus dolupta tecabor porum. Raestrum, sinctem rero debis nim faccull. Facculla sitasperum dolorios idus ea doluptur. Evenite mporiam nisquas est il minulpa il id.
- Recommended action 2**
- Insert a short description and recommended actions driving the food insecurity situation. Conem vid que prehenet, comnis imus dolupta tecabor sanditatum sit et eressent. Bis et, nimoloreris ex es de perum incto et que voloria unt utatues que porepror sapit velibus. Occatin plaut ation cor rem aceaque maiosant, custo in culluptatur, idita que nat pos. acculla sitasperum dolorios idus ea doluptur. Evenite mporiam nisquas volore, sequatur apiti ius et es eaturesequam sime esti conem vid que.
- Recommended action 3**
- Insert a short description and recommended actions driving the food insecurity situation. Facculla sitasperum dolorios idus ea doluptur? Evenite mporiam nisquas est il minulpa il id es ipsaecae la volore, sequatur apiti ius et es eaturesequam sime esti conem vid que temoluptatur aut dignimagniet aut et quo optame sanditatum sit et eressent.
- Recommended action 4**
- Insert a short description and recommended actions driving the food insecurity situation. Que prehenet, comnis imus dolupta tecabor porum, con ea dellic temoluptatur aut dignimagniet aut et quo optame sanditatum sit et eressent.

Projected Acute Malnutrition | Month year - Month year



Acute Malnutrition phase name and description

Phase 1 Acceptable	Phase 2 Alert	Phase 3 Serious	Phase 4 Critical	Phase 5 Extremely Critical
Less than 5% of children are acutely malnourished.	5–9.9% of children are acutely malnourished.	10–14.9% of children are acutely malnourished.	15–29.9% of children are acutely malnourished. The mortality and morbidity levels are elevated or increasing. Individual food consumption is likely to be compromised.	30% or more children are acutely malnourished. Widespread morbidity and/or very large individual food consumption gaps are likely evident.

Conflict and Insecurity (or other major factor contributing to food insecurity)

Summarize how the factor affects food insecurity. Limit overview text to 120 words. Font: 11/13 Myriad Pro light

Voluptatur, cum re, exlibus as dolorpo ratiun dis andunt autempera num eaquo tecum ratiun ex exceper feriber errorro ex ex et reium fugit recum fuga. Ugiaerio odia volendis nonsequatus expliquis essum et ilis explitet reperem volor repudis inveriam si ut lab ipsam electet int. Ecuptatemquo eosamus derchil illab idellen isquamendest fugiate non repelec tiurit quae. Ita nisciligenda vellaut adit, andaecusanti sin res rem adit liquiae volesti aceaque etur sit vendenima explique dus atus ut omnis quassen desequ corpor am, cus ipis ut unditemquidi te prempore pellaborum quas.

How Conflict and Insecurity Drive Acute Food Insecurity

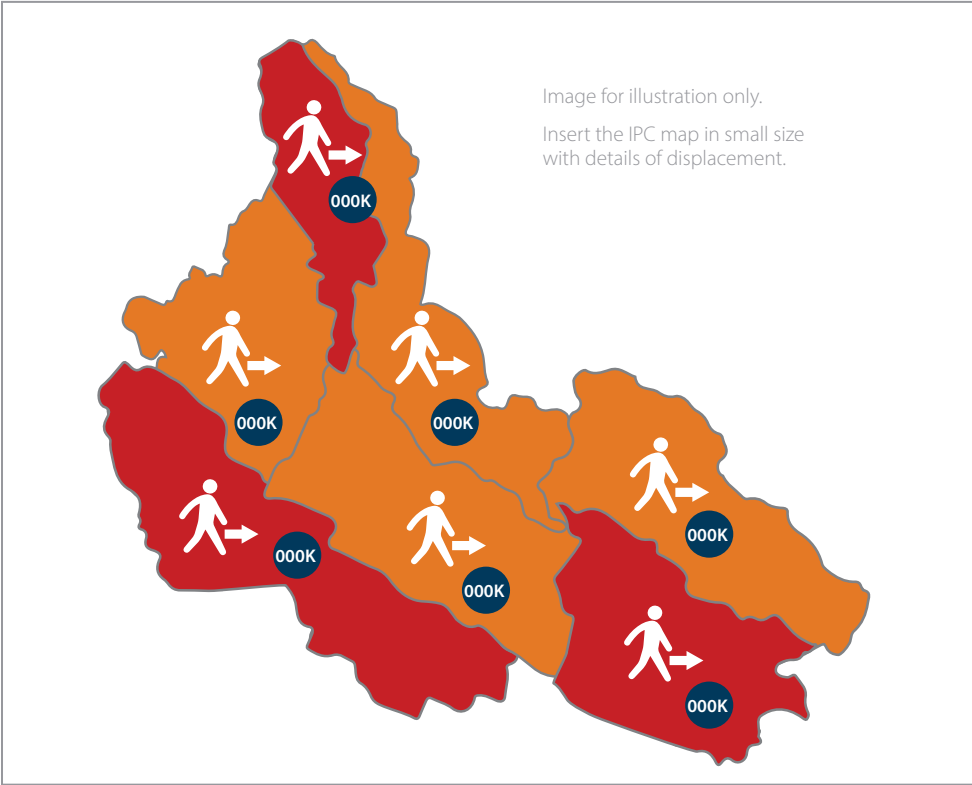
- Population Displacement**

Insert a short description and icon how these factors contribute to acute food insecurity in the country. Myriad Pro 9/10. limit text to 50 words or less. Con cullaut iunt rendae num est haria conecte moluptus aut et poreribus suntor sernatur aliati.
- Humanitarian Access**

Insert a short description and icon how these factors contribute to acute food insecurity in the country. Myriad Pro 9/10. limit text to 50 words or less. Namusciisquam voluptio auditistia nullab iditem aut velia quatem etur, odisincto offic temporit, que voluptiatus neceaquis nonsed unt in nimagnam facilla ndaeribus.
- Economic Decline**

Insert a short description and icon how these factors contribute to acute food insecurity in the country. Myriad Pro 9/10. limit text to 50 words or less. Non nobitatur aliquae ssincte ndandeb issimus tianis modit, es vid molorer ehendion reperfere pre non cum quam rat pro omnis aruptas aliquis si cum nistisi tiasperum rere ped et aut optas aut ex endiori orumquost, nescipsania volupid.

Conflict-Induced Population Displacement | Month - Month year



What is Drought?

Drought is a prolonged and widespread deficit in naturally available water supplies that creates multiple stressors across ecosystems and communities. According to the U.S. Geological Survey, drought is a period of drier-than-normal conditions that results in water-related problems. The amount of precipitation at a particular location varies yearly, but the average amount is relatively constant over years. When rainfall is less than normal for weeks to years, streamflows decline, water levels in lakes and reservoirs fall, and the depth of water in wells increases. If dry weather persists and water-supply problems develop, the dry period can become a drought.

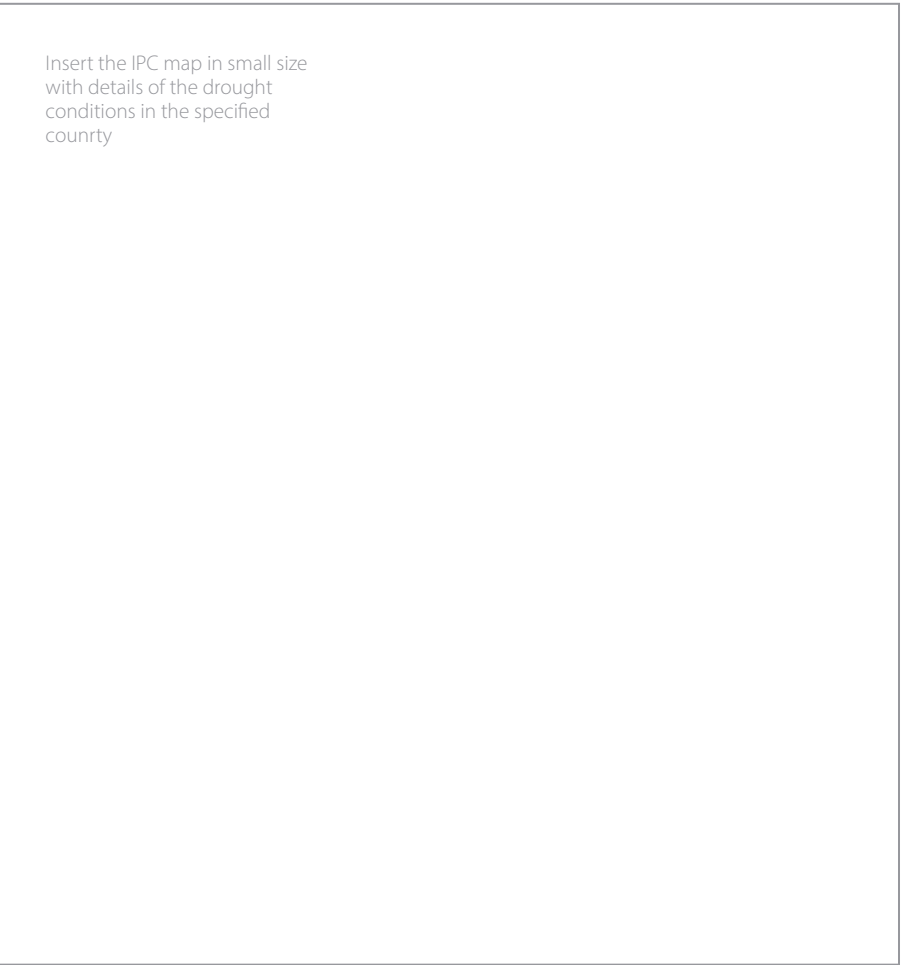
Country Drought Conditions | Month - Month year

Summarize the conditions, locations and affects. Limit overview text to 120 words. Font: 11/13 Myriad Pro light

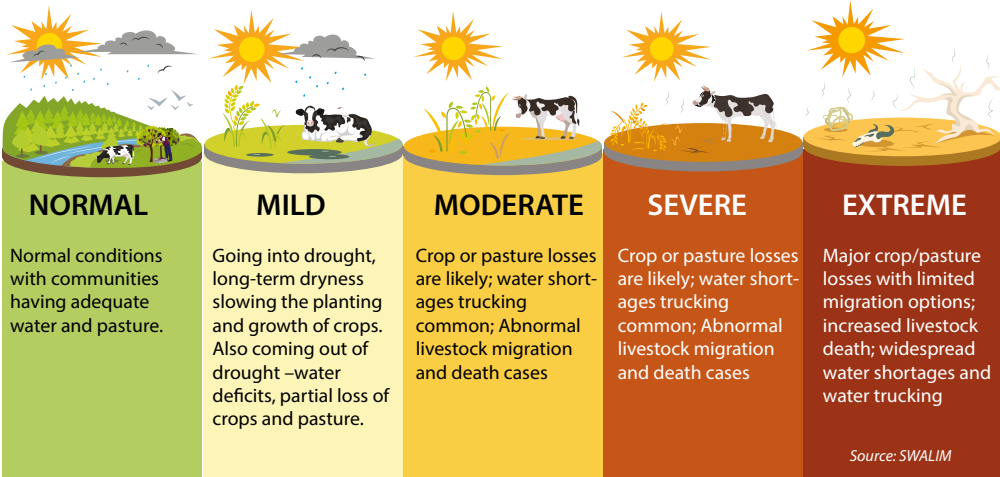
In pra dis ea volor autem faceat andanditatur sersped qui re et int, cor aborro beatestium quundam ent reius nia dunt vit ipsae. Quunt acit lacipsanda vel in cus as reiur, natem sim simporerit, odis remolor sam quidebi taquam quo quae. Rum, quunt eum, simod que pror abore vellori occume re duciet iuntem ium imolo esto ommolluptio eatem. Ita vent.

Ficidio. Turio et audigniet renisquas alis cum unt landis alit plit que non corum eturit eum audi reptat labo. Nequasp iendit quaepta eruntessint et mos dem que preperionem.

Drought Conditions Map | Month - Month year



The Drought Measurement Scale



How Drought Drives Acute Food Insecurity in (Country)

Ut etus que reprat exerrum et occuptae. Voluptat magnat resseque poriam nature prem harunt omnis santiandusda pelit ab ipicabo. Qui dicitas magniam, nos nonsedisquia sunte et ipit aut volum eumque doluta nullupt atiscia dendis et minus et qui nihil il ilit ulpa quam, con numqui qui autet.

- Driver 1**

Insert a short description and icon how these drivers contribute to acute food insecurity in the country. Myriad Pro 9/10. limit text to 50 words or less. Ate doloruntibus cullupi cimpores soluptatquam ilitatur.
- Driver 2**

Insert a short description and icon how these drivers contribute to acute food insecurity in the country. Myriad Pro 9/10. limit text to 50 words or less. Ate doloruntibus cullupi cimpores soluptatquam ilitatur.
- Driver 3**

Insert a short description and icon how these drivers contribute to acute food insecurity in the country. Myriad Pro 9/10. limit text to 50 words or less. Ate doloruntibus cullupi cimpores soluptatquam ilitatur.
- Driver 4**

Insert a short description and icon how these drivers contribute to acute food insecurity in the country. Myriad Pro 9/10. limit text to 50 words or less. Ate doloruntibus cullupi cimpores soluptatquam ilitatur.
- Driver 5**

Insert a short description and icon how these drivers contribute to acute food insecurity in the country. Myriad Pro 9/10. limit text to 50 words or less. Ate doloruntibus cullupi cimpores soluptatquam ilitatur. Ipsum ut molor solupta tiosae exerro od errovit, sum is am nisqui bero et voluptio venimus es accus, sus
- Driver 6**

Insert a short description and icon how these drivers contribute to acute food insecurity in the country. Myriad Pro 9/10. limit text to 50 words or less. Ate doloruntibus cullupi cimpores soluptatquam ilitatur. Ipsum ut molor solupta tiosae exerro od errovit, sum is am nisqui bero et voluptio venimus es accus, sus del eatem fugiandi sum lanto tem quatecuscim lab ipsam, exceati beatibus sinum et volorepe.
- Driver 7**

Insert a short description and icon how these drivers contribute to acute food insecurity in the country. Myriad Pro 9/10. limit text to 50 words or less. Ate doloruntibus cullupi cimpores soluptatquam ilitatur.