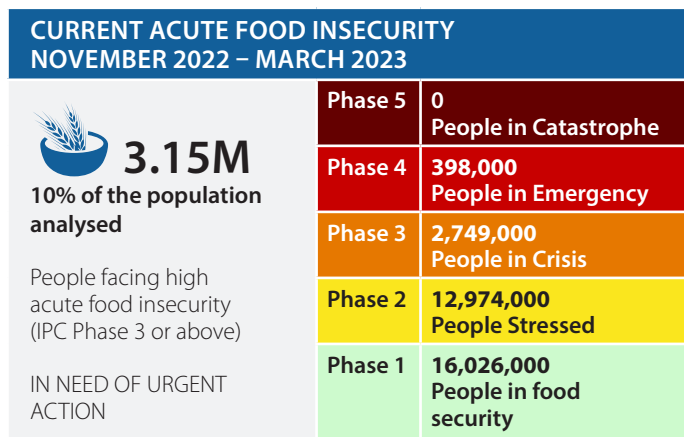




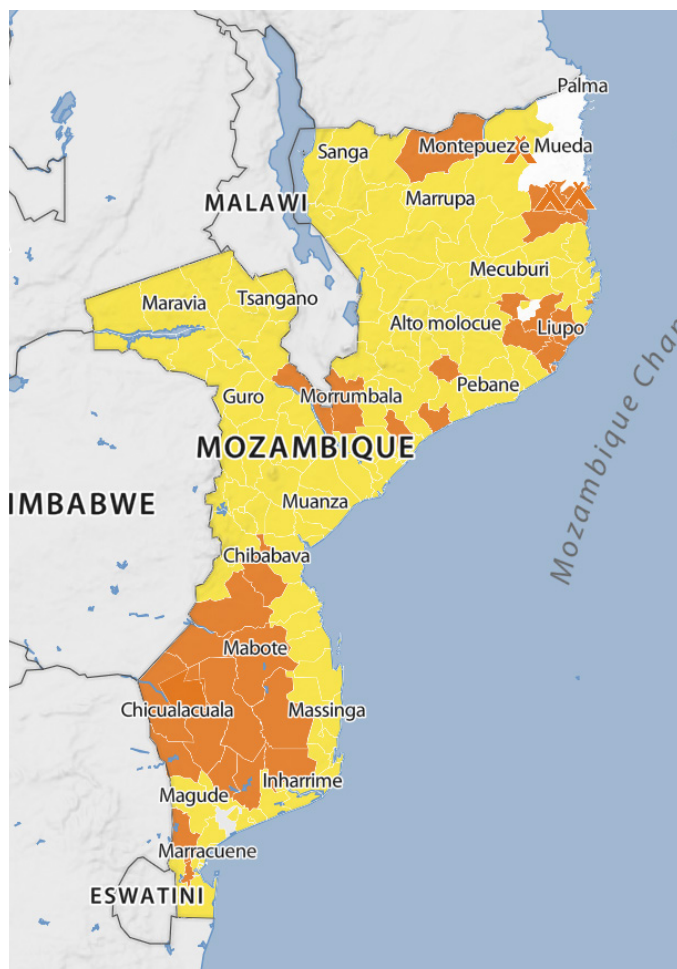
MOZAMBIQUE

IPC ACUTE FOOD INSECURITY ANALYSIS

November 2022 - March 2023
Published in March 29, 2023



CURRENT ACUTE FOOD INSECURITY NOVEMBER 2022 – MARCH 2023



Overview

Approximately 2.8 million people in Mozambique are classified in IPC Phase 3 (Crisis) and 400,000 people in IPC Phase 4 (Emergency) for the period of November 2022 to March 2023. An estimated 3.15 million people are in need of urgent action.

The 34 districts classified in Crisis (IPC Phase 3) are: Cabo Delgado (Ancuabe and Chiure, Balama - Namuno, Mecufi and Metuge, Pemba), Niassa (Mecula), Nampula (Liupo, Meconta and Mogincual, Mogovolas, Angoche, Ilha de mozambique), Zambezia (Maganja da costa, Morrumbala, Mulevala, Nicoadala), Tete (Doa and Mutarara), Sofala (Chemba, Cibabava), Inhambane (Mabote, Funhalouro and Panda) and Gaza (Chibuto, Chicalacuala, Massangena, Chigubo, Mabalane, Guija, Massingir and Mapai), Manica (Machaze). Additionally, the displaced population (IDPs) in Ancuabe-Chiure, Metuge and Montepuez-Mueda were also classified in Crisis (IPC Phase 3). It should be noted that eight of the 17 districts of Cabo Delgado province - Ibo, Macomia, Meluco, Mocímboa da Praia, Muidumbe, Nangade, Palma, Quissanga – , arguably among the most food insecure, were not covered by the present IPC analysis due to lack of data.

In the districts classified in IPC Phase 3 or 4 (Crisis or Emergency), the main contributing factors to the acute food insecurity observed in the current period were the occurrence of cyclones and strong winds – including tropical storm Ana in the provinces of Zambezia (affecting 32 percent of the population), Tete (24 percent) and Nampula (11 percent) and cyclone Gombe in the provinces of Nampula (54 percent) and Zambezia (17 percent). Below average and irregular rains in Gaza (63 percent), Manica (51 percent), Inhambane and Tete (36 percent) and Niassa (16 percent) as well as the increase in food prices and the loss of crops through animal destruction (Niassa) has also been noted.

In the Cabo Delgado and parts of the Niassa and Nampula provinces, insecurity and violence as a result of population displacement were the main causes of acute food insecurity. The arrival of displaced people in Pemba and Metuge has also increased job competition leading to higher unemployment rates, further exacerbating the food insecurity situation.

Key for the Map

IPC Acute Food Insecurity Phase Classification

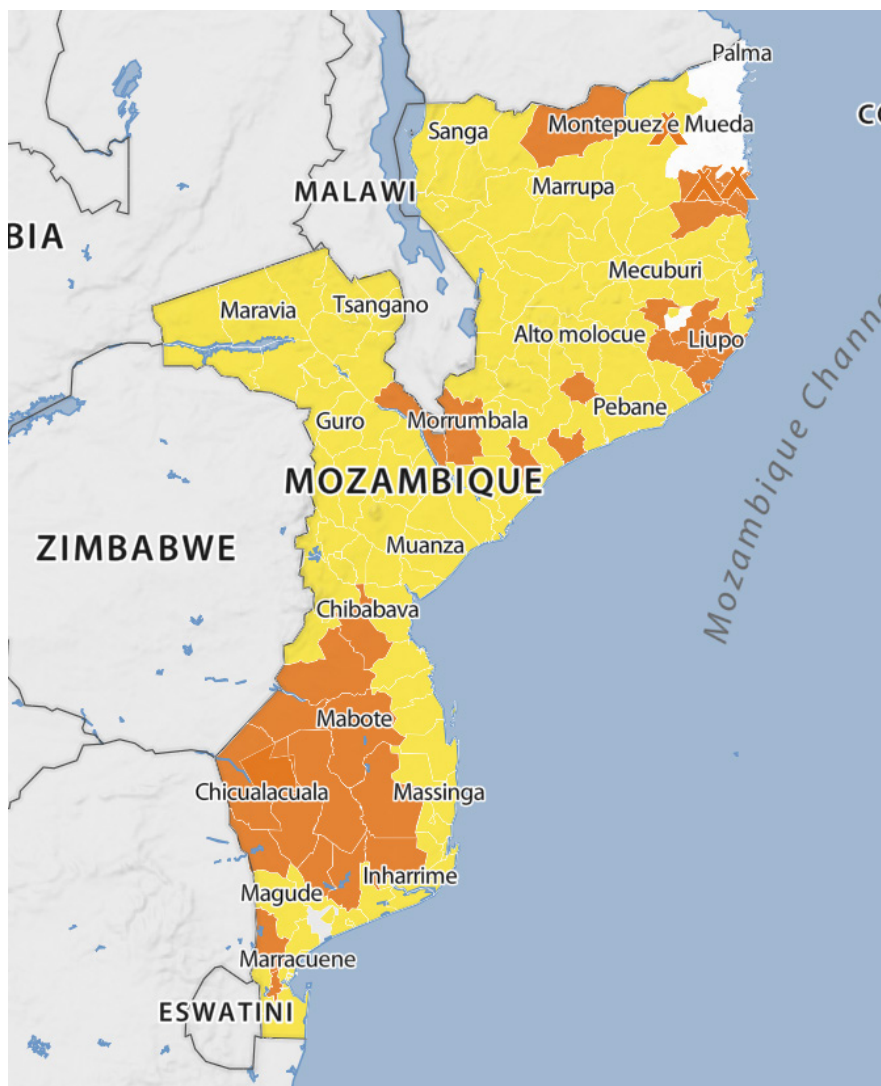
(mapped Phase represents highest severity affecting at least 20% of the population)



Map Symbols
 IDPs/other settlements classification

Evidence Level
 ** Medium

CURRENT IPC ACUTE FOOD INSECURITY SITUATION MAP AND POPULATION TABLE (NOVEMBER 2022 - MARCH 2023)



Key for the Map
IPC Acute Food Insecurity Phase Classification
 (mapped Phase represents highest severity affecting at least 20% of the population)

- 1 - Minimal
- 2 - Stressed
- 3 - Crisis
- 4 - Emergency
- 5 - Famine
- Areas with inadequate evidence
- Areas not analysed

Map Symbols
 IDPs/other settlements classification

Evidence Level
 ** Medium

Province	District	Total population	Phase 1		Phase 2		Phase 3		Phase 4		Phase 5		Area Phase	Phase 3+	
			#people	%	#people	%	#people	%	#people	%	#people	%		#people	%
Gaza	Chibuto	232,024	81,208	35	104,410	45	34,803	15	11,601	5	0	0	3	46,404	20
	Chicualacuala	29,166	11,666	40	11,666	40	5,833	20	0	0	0	0	3	5,833	20
	Chigubo	22,600	6,780	30	11,300	50	3,390	15	1,130	5	0	0	3	4,520	20
	Chokwe	237,671	118,835	50	83,184	35	23,767	10	11,883	5	0	0	2	35,650	15
	Chongoene	121,661	60,830	50	54,747	45	6,083	5	0	0	0	0	2	6,083	5
	Guija	93,185	32,614	35	37,274	40	18,637	20	4,659	5	0	0	3	23,296	25
	Limpopo	153,875	84,631	55	61,550	40	7,693	5	0	0	0	0	2	7,693	5
	Mabalane	39,550	15,820	40	15,820	40	5,932	15	1,977	5	0	0	3	7,909	20
	Mandlakaze	141,974	92,283	65	49,690	35	-	-	0	0	0	0	2	0	0
	Mapai	29,106	13,097	45	10,187	35	5,821	20	-	0	0	0	3	5,821	20
	Massangena	22,069	8,827	40	8,827	40	3,310	15	1,103	5	0	0	3	4,413	20
	Massingir	37,614	13,164	35	16,926	45	5,642	15	1,880	5	0	0	3	7,522	20
	Xai-xai city	163,259	81,629	50	73,466	45	8,162	5	0	0	0	0	2	8,162	5
	Total		1,323,754	621,390	47	539,052	41	129,077	10	34,236	3	0	0		163,306



Province	District	Total population	Phase 1		Phase 2		Phase 3		Phase 4		Phase 5		Area Phase	Phase 3+	
			#people	%	#people	%	#people	%	#people	%	#people	%		#people	%
Inhambane	Funhalouro	46.119	20.753	45	13.835	30	9.223	20	2.305	5	0	0	3	11.528	25
	Govuro	37.972	20.884	55	11.391	30	3.797	10	1.898	5	0	0	2	5.695	15
	Homoine	121.918	67.054	55	42.671	35	6.095	5	6.095	5	0	0	2	12.190	10
	Inhambane city	98.257	58.954	60	34.389	35	4.912	5	0	0	0	0	2	4.912	5
	Inharrime	120.564	78.366	65	36.169	30	6.028	5	0	0	0	0	2	6.028	5
	Inhassoro	61.699	37.019	60	21.594	35	3.084	5	0	0	0	0	2	3.084	5
	Jangamo	110.011	66.006	60	38.503	35	5.500	5	0	0	0	0	2	5.500	5
	Mabote	53.313	21.325	40	18.659	35	10.662	20	2.665	5	0	0	3	13.327	25
	Massinga	255.429	153.257	60	89.400	35	12.771	5	0	0	0	0	2	12.771	5
	Maxixe city	155.521	93.312	60	54.432	35	7.776	5	0	0	0	0	2	7.776	5
	Morrumbene	145.468	72.734	50	50.913	35	14.546	10	7.273	5	0	0	2	21.819	15
	Panda	45.929	25.260	55	9.185	20	9.185	20	2.296	5	0	0	3	11.481	25
	Vilankulo	167.081	100.248	60	58.478	35	8.354	5	0	0	0	0	2	8.354	5
	Zavala	161.832	97.099	60	64.732	40	0	0	0	0	0	0	2	0	0
	Total	1.581.113	912.278	58	544.359	34	101.933	6	22.532	1	0	0		124.465	7
Manica	Barue	229.325	137.595	60	80.263	35	11.466	5	0	0	0	0	2	11.466	5
	Chimoio city	497.653	223.943	45	273.709	55	0	0	0	0	0	0	2	0	0
	Gondola	236.855	118.427	50	106.584	45	11.842	5	0	0	0	0	2	11.842	5
	Guro	114.365	51.464	45	62.900	55	0	0	0	0	0	0	2	0	0
	Macate	99.432	49.716	50	44.744	45	0	0	0	0	0	0	2	0	0
	Machaze	148.784	52.074	35	66.952	45	22.317	15	7.439	5	0	0	3	29.756	20
	Macossa	54.309	19.008	35	32.585	60	2.715	5	0	0	0	0	2	2.715	5
	Manica	274.082	150.745	55	123.336	45	0	0	0	0	0	0	2	0	0
	Mossurize	239.733	119.866	50	112.674	47	7.191	3	0	0	0	0	2	7.191	3
	Sussundenga	205.189	112.853	55	82.075	40	10.259	5	0	0	0	0	2	10.259	5
	Tambara	62.978	22.042	35	34.637	55	6.297	10	0	0	0	0	2	6.297	10
	Vanduzi	136.047	74.825	55	54.418	40	6.802	5	0	0	0	0	2	6.802	5
Total	2.298.752	1.132.563	49	1.074.885	47	78.889	3	7.439	0	0	0		86.328	4	
Maputo	Boane	273.433	136.716	50	82.029	30	54.686	20	0	0	0	0	3	54.686	20
	Magude	80.946	40.473	50	32.378	40	8.094	10	0	0	0	0	2	8.094	10
	Manhica	266.435	199.826	75	61.280	23	5.328	2	0	0	0	0	2	5.328	2
	Marracuene	284.327	213.245	75	71.081	25	0	0	0	0	0	0	2	0	0
	Matola city	1.341.515	804.909	60	536.606	40	0	0	0	0	0	0	2	0	0
	Matutuine	56.763	22.705	40	25.543	45	8.514	15	0	0	0	0	2	8.514	15
	Moamba	115.127	51.807	45	40.294	35	23.025	20	0	0	0	0	3	23.025	20
	Namaacha	61.262	21.441	35	30.631	50	6.126	10	0	0	0	0	2	6.126	10
Total	2.479.808	1.491.124	60	879.845	35	105.773	4	0	0	0	0		105.773	4	
Maputo City	Distrito de Katembe	30.203	13.591	45	15.101	50	1.510	5	0	0	0	0	2	1.510	5
	Distrito Municipal Kamavota	342.790	119.976	35	205.674	60	17.139	5	0	0	0	0	2	17.139	5
	Distrito Municipal KaMFumo	79.881	67.898	85	11.982	15	0	0	0	0	0	0	1	0	0
	Distrito Municipal Kamubukuane	335.636	151.036	45	167.818	50	16.781	5	0	0	0	0	2	16.781	5
	Distrito Municipal Ka Nlamankulo	133.310	86.651	65	39.993	30	6.665	5	0	0	0	0	2	6.665	5
	Distrito Municipal KaMaxaquene	205.164	82.065	40	112.840	55	10.258	5	0	0	0	0	2	10.258	5
	Total	1.126.984	521.220	46	553.409	49	52.353	5	0	0	0	0		52.353	5



Province	District	Total population	Phase 1		Phase 2		Phase 3		Phase 4		Phase 5		Area Phase	Phase 3+	
			#people	%	#people	%	#people	%	#people	%	#people	%		#people	%
Nampula	Angoche	420.569	105.142	25	189.256	45	105.142	25	21.028	5	0	0	3	126.170	30
	Erati	459.396	252.667	55	183.758	40	22.969	5	0	0	0	0	2	22.969	5
	Ilha de Mocambique	83.977	8.397	10	58.783	70	16.795	20	0	0	0	0	3	16.795	20
	Lalaua	125.849	44.047	35	69.216	55	12.584	10	0	0	0	0	2	12.584	10
	Larde	112.320	28.080	25	69.638	62	11.232	10	3.369	3	0	0	2	14.601	13
	Liupo	104.622	31.386	30	52.311	50	15.693	15	5.231	5	0	0	3	20.924	20
	Malema	258.793	168.215	65	77.637	30	12.939	5	0	0	0	0	2	12.939	5
	Meconta	270.314	81.094	30	135.157	50	40.547	15	13.515	5	0	0	3	54.062	20
	Mecuburi	242.959	109.331	45	121.479	50	12.147	5	0	0	0	0	2	12.147	5
	Memba	384.984	134.744	35	204.041	53	38.498	10	7.699	2	0	0	2	46.197	12
	Mogincual	111.074	33.322	30	55.537	50	16.661	15	5.553	5	0	0	3	22.214	20
	Mogovolas	437.409	109.352	25	218.704	50	100.604	23	8.748	2	0	0	3	109.352	25
	Moma	384.612	134.614	35	199.998	52	38.461	10	11.538	3	0	0	2	49.999	13
	Monapo	473.957	165.884	35	236.978	50	47.395	10	23.697	5	0	0	2	71.092	15
	Mossuril	208.339	72.918	35	114.586	55	20.833	10	0	0	0	0	2	20.833	10
	Muecate	157.393	78.696	50	62.957	40	15.739	10	0	0	0	0	2	15.739	10
	Murupula	220.304	154.212	70	55.076	25	11.015	5	0	0	0	0	2	11.015	5
	Nacala-a-velha	146.243	80.433	55	58.497	40	7.312	5	0	0	0	0	2	7.312	5
	Nacala-porto	362.144	72.428	20	253.500	70	36.214	10	0	0	0	0	2	36.214	10
	Nacaroa	170.481	85.240	50	68.192	40	17.048	10	0	0	0	0	2	17.048	10
Nampula city	957.596	335.158	35	478.798	50	143.639	15	0	0	0	0	2	143.639	15	
Rapale	194.955	48.738	25	97.477	50	38.991	20	9.747	5	0	0	3	48.738	25	
Ribaue	311.522	202.489	65	93.456	30	15.576	5	0	0	0	0	2	15.576	5	
Total		6.599.812	2.536.598	38	3.155.041	48	798.034	12	110.125	2	0	0		908.159	14
Niassa	Chimbonila	91.533	59.496	65	32.036	35	0	0	0	0	0	0	2	0	0
	Cuamba	349.576	244.703	70	104.872	30	0	0	0	0	0	0	2	0	0
	Lago	136.579	88.776	65	47.802	35	0	0	0	0	0	0	2	0	0
	Lichinga city	324.279	194.567	60	113.497	35	16.213	5	0	0	0	0	2	16.213	5
	Majune	50.504	30.302	60	20.201	40	0	0	0	0	0	0	2	0	0
	Mandimba	271.771	163.062	60	95.119	35	13.588	5	0	0	0	0	2	13.588	5
	Marrupa	99.897	49.948	50	44.953	45	4.994	5	0	0	0	0	2	4.994	5
	Maua	86.178	64.633	75	21.544	25	0	0	0	0	0	0	2	0	0
	Mavago	37.790	24.563	65	11.337	30	0	0	0	0	0	0	2	0	0
	Mecanhelas	341.587	170.793	50	170.793	50	0	0	0	0	0	0	2	0	0
	Mecula	26.372	13.186	50	7.911	30	3.955	15	1.318	5	0	0	3	5.273	20
	Metarica	57.196	42.897	75	14.299	25	0	0	0	0	0	0	2	0	0
	Muembe	55.281	38.696	70	16.584	30	0	0	0	0	0	0	2	0	0
	Ngauma	120.973	60.486	50	48.389	40	12.097	10	0	0	0	0	2	12.097	10
	Nipepe	56.920	42.690	75	14.230	25	0	0	0	0	0	0	2	0	0
Sanga	96.380	57.828	60	38.552	40	0	0	0	0	0	0	2	0	0	
Total		2.202.816	1.346.632	61	802.126	36	50.847	2	1.319	0	0	0		52.166	2
Sofala	Buzi	212.275	106.137	50	95.523	45	10.613	5	0	0	0	0	2	10.613	5
	Caia	190.386	95.193	50	85.673	45	9.519	5	0	0	0	0	2	9.519	5
	Chemba	99.089	44.590	45	34.681	35	14.863	15	0	0	0	0	3	14.863	15
	Cheringoma	70.038	35.019	50	28.015	40	7.003	10	0	0	0	0	2	7.003	10
	Chibabava	160.851	80.425	50	48.255	30	24.127	15	8.042	5	0	0	3	32.169	20
	Cidade da Beira	719.806	287.922	40	395.893	55	35.990	5	0	0	0	0	2	35.990	5
	Dondo	236.825	130.253	55	94.730	40	11.841	5	0	0	0	0	2	11.841	5
	Gorongosa	213.069	149.148	70	53.267	25	10.653	5	0	0	0	0	2	10.653	5
	Machanga	66.461	33.230	50	26.584	40	3.323	5	0	0	0	0	2	3.323	5
	Maringue	113.484	85.113	75	22.696	20	5.674	5	0	0	0	0	2	5.674	5
	Marromeu	187.740	131.418	70	46.935	25	9.387	5	0	0	0	0	2	9.387	5
	Muanza	45.465	25.005	55	14.548	32	4.546	10	1.363	3	0	0	2	5.909	13
	Nhamatanda	335.540	201.324	60	117.438	35	16.777	5	0	0	0	0	2	16.777	5
Total		2.651.029	1.404.781	53	1.064.244	40	164.316	6	9.405	0	0	0		173.721	7



Province	District	Total population	Phase 1		Phase 2		Phase 3		Phase 4		Phase 5		Area Phase	Phase 3+	
			#people	%	#people	%	#people	%	#people	%	#people	%		#people	%
Tete	Angonia	566.990	396.893	70	153.087	27	17.009	3	0	0	0	0	2	17.009	3
	Cahora Bassa	167.310	83.655	50	66.924	40	16.731	10	0	0	0	0	2	16.731	10
	Changara	142.236	78.229	55	42.670	30	21.335	15	0	0	0	0	2	21.335	15
	Chifunde	182.239	91.119	50	72.895	40	18.223	10	0	0	0	0	2	18.223	10
	Chiuta	117.122	58.561	50	40.992	35	17.568	15	0	0	0	0	2	17.568	15
	Doa	100.631	35.220	35	40.252	40	20.126	20	5.031	5	0	0	3	25.157	25
	Macanga	183.660	91.830	50	73.464	40	18.366	10	0	0	0	0	2	18.366	10
	Magoe	103.214	41.285	40	51.607	50	10.321	10	0	0	0	0	2	10.321	10
	Marara	84.429	46.435	55	25.328	30	12.664	15	0	0	0	0	2	12.664	15
	Maravia	146.380	73.190	50	58.552	40	14.638	10	0	0	0	0	2	14.638	10
	Moatize	331.950	132.780	40	165.975	50	33.195	10	0	0	0	0	2	33.195	10
	Mutarara	204.251	71.487	35	81.700	40	40.850	20	10.212	5	0	0	3	51.062	25
	Tete city	499.387	374.540	75	124.846	25	0	0	0	0	0	0	2	0	0
	Tsangano	248.008	186.006	75	49.601	20	12.400	5	0	0	0	0	2	12.400	5
	Zumbo	96.110	72.082	75	19.222	20	4.805	5	0	0	0	0	2	4.805	5
Total		3.173.917	1.833.317	58	1.067.120	34	258.231	8	15.243	0	0	0		273.474	9
Zambezia	Alto molocue	414.502	248.701	60	145.075	35	20.725	5	0	0	0	0	2	20.725	5
	Chinde	103.313	82.650	80	15.496	15	5.165	5	0	0	0	0	2	5.165	5
	Derre	131.076	85.199	65	45.876	35	0	0	0	0	0	0	2	0	0
	Gile	255.529	178.870	70	63.882	25	12.776	5	0	0	0	0	2	12.776	5
	Gurue	503.427	302.056	60	176.199	35	25.171	5	0	0	0	0	2	25.171	5
	Ile	230.358	138.214	60	80.625	35	11.517	5	0	0	0	0	2	11.517	5
	Inhassunge	107.500	53.750	50	37.625	35	16.125	15	0	0	0	0	2	16.125	15
	Luabo	69.789	38.383	55	27.915	40	3.489	5	0	0	0	0	2	3.489	5
	Lugela	217.887	98.049	45	98.049	45	21.788	10	0	0	0	0	2	21.788	10
	Maganja da costa	173.883	69.553	40	69.553	40	34.776	20	0	0	0	0	3	34.776	20
	Milange	713.553	499.487	70	178.388	25	35.677	5	0	0	0	0	2	35.677	5
	Mocuba	482.884	289.730	60	169.009	35	24.144	5	0	0	0	0	2	24.144	5
	Mocubela	144.490	79.469	55	65.020	45	0	0	0	0	0	0	2	0	0
	Molumbo	383.980	268.786	70	76.796	20	38.398	10	0	0	0	0	2	38.398	10
	Mopeia	183.429	91.714	50	64.200	35	27.514	15	0	0	0	0	2	27.514	15
	Morrumbala	421.084	168.433	40	168.433	40	63.162	15	21.054	5	0	0	3	84.216	20
	Mulevala	126.336	60.641	48	37.900	30	25.267	20	2.526	2	0	0	3	27.793	22
	Namacurra	245.102	122.551	50	110.295	45	12.255	5	0	0	0	0	2	12.255	5
	Namarroi	169.899	101.939	60	67.959	40	0	0	0	0	0	0	2	0	0
	Nicoadala	212.683	85.073	40	74.439	35	53.170	25	0	0	0	0	3	53.170	25
Pebane	246.575	123.287	50	110.958	45	12.328	5	0	0	0	0	2	12.328	5	
Quelimane	421.844	253.106	60	147.645	35	21.092	5	0	0	0	0	2	21.092	5	
Total		5.959.123	3.439.648	58	2.031.347	34	464.539	8	23.580	0	0	0		488.119	8
Cabo Delgado	Ancuabe e Chiure	552.455	198.884	36	248.605	45	81.491	15	24.890	5	0	0	3	106.381	20
	Balama e Namuno	491.095	319.212	65	147.329	30	26.110	5	0	0	0	0	2	26.110	5
	IDPs Ancuabe e Chiure	160.428	24.064	15	56.150	35	56.150	35	24.022	15	0	0	3	80.172	50
	IDPs e Metuge	163.866	24.580	15	49.160	30	65.752	40	24.030	15	0	0	3	89.782	55
	IDPs Montepuez e Mueda	256.721	51.344	20	102.688	40	90.583	35	12.061	5	0	0	3	102.644	40
	Mecufi e Metuge	177.647	35.529	20	54.081	30	70.246	40	17.110	10	0	0	3	87.356	50
	Montepuez e Mueda	523.957	183.384	35	261.979	50	50.583	10	26.010	5	0	0	2	76.593	15
	Pemba City	251.759	50.351	20	80.563	32	97.348	39	24.004	10	0	0	3	121.352	49
	Total		2.744.822	796.013	29	1.262.641	46	538.273	20	152.127	6	0	0		690.400
Grand Total		31,966,572	16,026,000	50	12,974,000	40	2,748,872	9	397,551	1	0	0		3,146,423	10

Note: A population in Phase 3+ does not necessarily reflect the full population in need of urgent action. This is because some households may be in Phase 2 or even 1 but only because of receipt of assistance, and thus, they may be in need of continued action. Marginal inconsistencies that may arise in the overall percentages of totals and grand totals are attributable to rounding.



CURRENT ACUTE FOOD INSECURITY SITUATION NOVEMBER 2022 - MARCH 2023

In the period of November 2022 to March 2023, there are approximately 3.15 million people facing high acute food insecurity (IPC Phase 3 or above), of which 398,000 face Emergency levels of acute food insecurity (IPC Phase 4). The highest number of people facing Crisis (IPC Phase 3) or Emergency (IPC Phase 4) acute food insecurity are found in the districts of Cabo Delgado, Gaza and Nampula – specifically in the districts of Pemba, Mecufi and Metuge. High levels of food insecurity were also detected in households displaced within the country (IDPs) in Ancuabe-Chiure, Metuge and Montepuez-Mueda, Chicualacuala, Chigubo, Chokwe, Guija, Mabalane, Mapai, Massangena, Ilha de Moçambique, Liupo, Meconta and Mongicual.

It should be noted that the estimates of the percentage of people in a situation of acute food insecurity in this assessment, were obtained based on the protocols of the Integrated Food Security Phase Classification (IPC) that used primary data from the Post-Harvest Food Security Assessment 2022, the results of the SMART assessment conducted in March 2022, (Post-Harvest Period) and other information – taking into account the various intervention actions undertaken by the government and partners in the period under review.

Due to lack of data and low accessibility, 8 of the 17 districts in Cabo Delgado – Ibo, Macomia, Meluco, Mocímboa da Praia, Muidumbe, Nangade, Palma, Quissanga – could not be analysed. These districts are the most affected by insecurity and displacement of people.

In the rainy season, from November 2022 to March 2023, it was estimated that approximately 1.8 million people were affected by shocks. Due to the occurrence of natural disasters – namely, cyclones Gombe, Dumako and Ana – 945,177 people were affected in the provinces of Nampula (674,029), Zambezia (187,497) Tete (35,940), Manica (18,055), Sofala (27,385) and Niassa (2,271).

In Niassa, Cabo Delgado, Nampula, Zambézia, Inhambane, Sofala and Maputo provinces, an estimated 1.12 million people are displaced (registration of the provincial delegations of the National Institute for Risk and Disaster Management, September 2022). 92 percent of these people are in Cabo Delgado, 5.8 percent in Nampula, and the rest of the displaced population is located in Zambezia, Niassa, Manica, Sofala, Inhambane and Maputo Province.

In Cabo Delgado, Nampula and Niassa provinces 644,175 people received Humanitarian Food Assistance (HFA) in October 2022. This humanitarian assistance was provided by member partners of the Food Security Cluster, which coordinates and registers food security interventions. 95 percent of the 644,175 people affected by armed conflict were assisted by WFP and 22,600 people were assisted in the south of the country. 21,398 people received post cyclone Gombe recovery assistance from WFP, with a food kit equivalent to 78 percent kilocalories per day for the month of October 2022. However, in October 2022, other members of the Food Security Cluster provided food assistance to an additional 32,476 people.

It should be noted that the distribution of the WFP kits will continue from November 2022 to January 2023. Therefore, WFP expects to assist approximately 1.07 million IDPs and host families in Cabo Delgado, Niassa and Nampula, as well as people affected by drought in the south and center of the country with complete rations.



RECOMMENDED ACTIONS

- Ensure urgent humanitarian assistance to the 398,000 people identified in IPC Phase 4 (Emergency). Specifically, a combination of complementary interventions is recommended to minimize the effects of shocks both on access to food as well as restoring and rebuilding livelihoods.
- Consider the annual need for direct food assistance and productive social assistance to a percentage of the national population in IPC Phase 3 (Crisis) on account of exposure to shocks, including the resident population and IDPs.
- Consider the percentages of people in IAA for analysis and planning, taking into account that the absolute number of this target group changes constantly due to the continuous flow of IDPs between districts.
- Increase the resilience of IDPs with means of agricultural production while maintaining humanitarian food assistance.
- Study strategies to improve levels of access to safe water in the coming periods due to low rainfall.
- Continue with livelihood programs to reduce dependence on humanitarian aid and food diversity.
- Provide agricultural and fisheries inputs.
- Intensify technical assistance and monitor the pest and disease situation, and adopt a national food security policy and strategy guided by national monitoring indicators.
- Ensure the successful implementation of processes to increase the availability of food groups in the diet of Mozambicans, accompanied by a nutrition education program that optimizes local food availability.
- Ensure the implementation of the post-shock food security and nutrition vulnerability assessment between March and April 2023 to identify the magnitude and number of people affected by the rainy and cyclone season to ensure a timely response.

Risk factors to monitor

- Terrorist activity and internal displacement of people.
- Food and non-food prices.
- Access to safe water.
- Agricultural and fisheries inputs.
- Pests and diseases.

Monitoring activities and situation updates

- Build resilience capacity for IDPs.
- Provide basic health care with emphasis on children and adults with chronic diseases.
- Create conditions for monitoring assessments on the food security and malnutrition situation.

PROCESS AND METHODOLOGY

For food insecurity, the workshop took place in person from the 7th to the 18th of November 2022, in Boane District, Maputo Province. Participants included technicians from SETSAN Central and from the Provinces, technicians from the Ministry of Agriculture and Rural Development (MADER), Ministry of Public Works, Housing and Water Resources (MOPHRH), FAO, FEWS Net and World Food Program (WFP), ADPP TRANSFORM NUTRITION, PLAN INTERNATIONAL, NUTRITION CLUSTERS AND FOOD SECURITY CLUSTER, with the guidance of national and international IPC facilitators and the Integrated Phase Classification Global Support Unit (IPC-GSU). Of this total, two (2) were dedicated to the analysts' refresher training and the remaining days dedicated to the actual analyses. The entire process was coordinated by the Technical Secretariat for Food Security and Nutrition (SETSAN), the lead agency for the IPC Technical Working Group (GTT-IPC) in Mozambique at the central level, in close collaboration with SETSAN at the provincial level. Prior to the workshop, invitations were formulated and sent, through SETSAN, to the different stakeholders. This analysis covered the whole country, with the exception of Cabo Delgado. The analysis in Cabo Delgado took place between May and June 2022. The results presented in this report are the results of an update of the projection period from October 2022 to March 2023, carried out by SETSAN in January 2023, and with the indirect collaboration of IPC partners in Mozambique to refine the results.

Sources:

For the acute food insecurity analysis, evidence on outcome indicators and a considerable part of the contributing factors came from the post-harvest assessment conducted between September 15 and November 6, 2022 in the visited districts. Data on population were extracted from the population projections per district for the year 2023 of the National Institute for Statistics (INE); on displaced population, they were extracted from the International Organization for Migration (IOM), through the United Nations Office for the Coordination of Humanitarian Affairs (OCHA), and the National Institute for Disaster Management (INGD) at the central level. FEWS NET data on cereal prices and agrometeorological data, agricultural and livestock production data from the visited districts, WFP Humanitarian assistance and rainfall data, pest and disease data from SDAEs were also used.

The analysis in Cabo Delgado used as main source the post-shock assessment conducted in March and April 2022 by SETSAN with WFP collaboration. The analysis of household level data followed the following thematic areas: Analysis of shocks that influenced the Food and Nutrition Security status; Analysis on income sources; Displacement; Analysis on the possession of food reserves; Analysis on Food Consumption.

Limitations of the analysis:

Demanding financial resources to carry out the evaluations, which made it possible to do the evaluations at different times, which made the analyses late. Theoretical training lasting only 2 days. Inability to cover eight districts in Cabo Delgado affected by insecurity due to limited access for data collection.

What is the IPC and IPC Acute Food Insecurity?

The IPC is a set of tools and procedures to classify the severity and characteristics of acute food and nutrition crises as well as chronic food insecurity based on international standards. The IPC consists of four mutually reinforcing functions, each with a set of specific protocols (tools and procedures). The core IPC parameters include consensus building, convergence of evidence, accountability, transparency and comparability. The IPC analysis aims at informing emergency response as well as medium and long-term food security policy and programming.

For the IPC, Acute Food Insecurity is defined as any manifestation of food insecurity found in a specified area at a specific point in time of a severity that threatens lives or livelihoods, or both, regardless of the causes, context or duration. It is highly susceptible to change and can occur and manifest in a population within a short amount of time, as a result of sudden changes or shocks that negatively impact on the determinants of food insecurity.

Contact for further information:

Lima, António Pacheco

Head of IPC Technical Group

Email: pachecoleo69@yahoo.com.br

IPC Global Support Unit

www.ipcinfo.org

This analysis was conducted with the coordination of the Technical Secretariat for Food Security and Nutrition (SETSAN) of the Ministry of Agriculture and Rural Development. It benefited from the technical and financial support of UNICEF, WFP, FAO, IPC GSU and FEWS NET.

Classification of food insecurity and malnutrition performed using IPC protocols, which are developed and implemented worldwide by the Global Partnership on IPC - Action Against Hunger, CARE, CILSS, EC- JRC, FAO, FEWSNET, Global Food Security Cluster, Global Nutrition Cluster, IGAD, Oxfam, PROGRESAN-SICA, SADC, Save the Children, UNICEF and WFP.

IPC Analysis Partners:

