

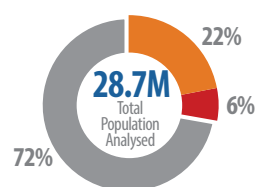
Key Figures



More than 8 million people in Ethiopia were in Crisis (IPC Phase 3) or worse through September 2019



28% of the analyzed population is in severe acute food insecurity - people IPC Phase 3 (Crisis)+



Population estimates: CSA Ethiopia*

Key Drivers



Erratic Rainfall

Below average *Belg* and *Gu/Sugum* rainfall in parts of Ethiopia including in Afar, Oromia, Somali and Tigray regions, continues to affect food production, reducing access to food.



Conflict

Recurrent conflict in different parts of the country has driven internal displacement, disrupted livelihood activities and distorted food market systems and prices.



High Food Prices

High staple food prices in many areas of Ethiopia including, SNNPR, Somali and Tigray have limited food access for the poor.

Overview

Food security analysis conducted in six regions of Ethiopia indicates that, despite ongoing assistance, an estimated 8 million people (27% of the 28.7 million people analysed) were severely food insecure in IPC Phase 3 (Crisis) or worse between July and September 2019. Of these, about 6.1 million people were classified in IPC Phase 3 (Crisis) and about 1.9 million people in IPC Phase 4 (Emergency).

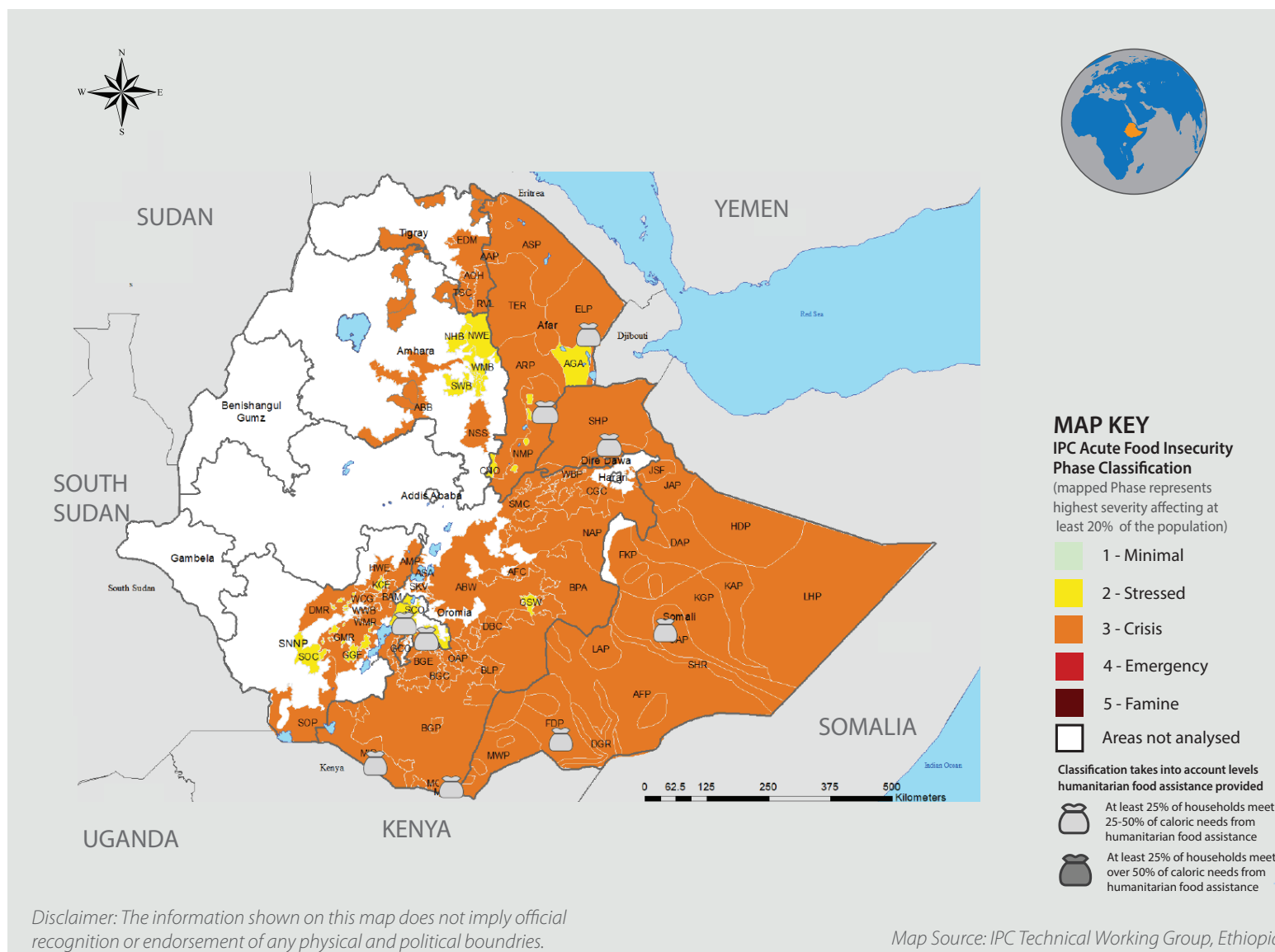
Between October 2019 and January 2020, Ethiopia's food security situation is likely to improve slightly due to the seasonal (*Meher*) harvests. However, the below normal *Belg* season production, conflict and climate-induced displacement, high food prices, and the long dry spell in the northeastern pastoral areas will likely affect the food security situation resulting in about 6.7 million people expected to be in Crisis (IPC Phase 3) or worse.

Between February and June 2020, harvests from the *Meher* season will likely be dwindling and insufficient to sustain adequate food consumption through the lean season in areas that rely on *Belg* agricultural and pastoral production. Moreover, households relying on pastoral livelihoods typically depend on markets for food during this period. As food prices are expected to remain higher than previous years, these will most likely affect market access. About 8.5 million people are thus expected to be in Crisis (IPC Phase 3) or worse.

The analysis includes all food insecure households irrespective of whether they benefit from Productive Safety Net Programme (PSNP), including current IDPs or returnees. Several factors exacerbate food insecurity in Ethiopia. Conflict and climatic factors have driven internal displacement in different parts of the country, disrupting livelihood activities and distorting food market systems and prices. As of end of September 2019, there were around 1.64 million Internally Displaced Persons (IDPs) (IOM, September 2019). About two thirds were displaced by inter-communal violence, while those displaced by climatic factors were estimated to be slightly below half a million. Below average *Belg* and *Gu/Sugum* rainfall in parts of Afar, Oromia, Somali, Tigray and SNNP regions, curtailed food production and reduced livestock production.

Publication date: 20 November 2019 | *IPC population data is based on population estimate by the Central Statistical Agency of Ethiopia. | ** Displacement estimates are from IOM-DTM Ethiopia | Feedback: IPC@FAO.org | Disclaimer: The information shown on this map does not imply official recognition or endorsement of any physical and political boundaries.

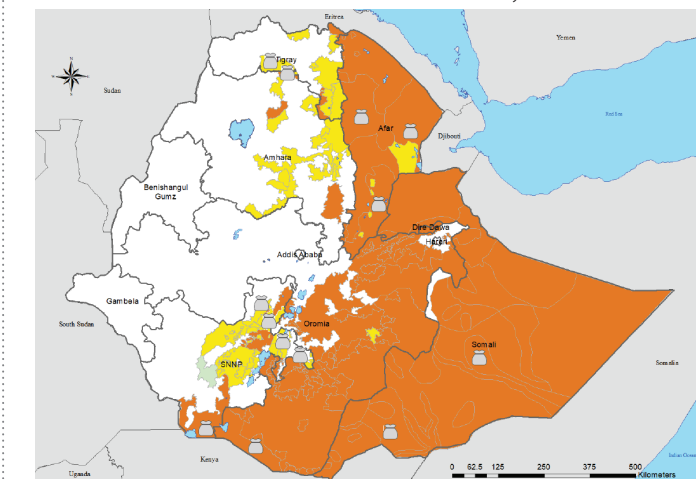
Acute Food Insecurity | July - September 2019



Projection: Acute Food Insecurity | Oct 2019 - Jan 2020



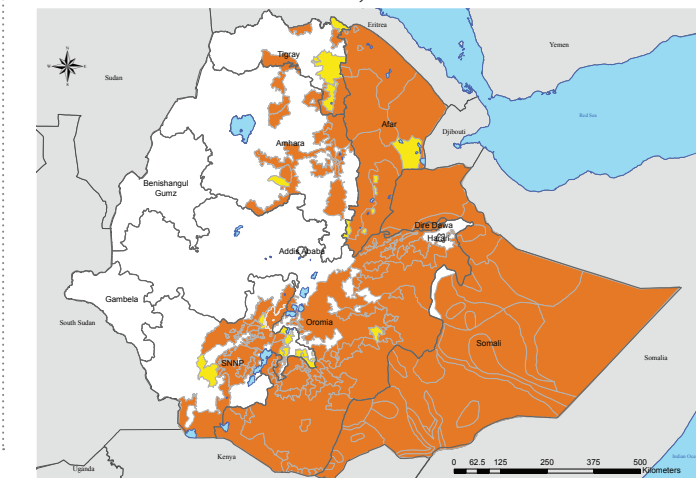
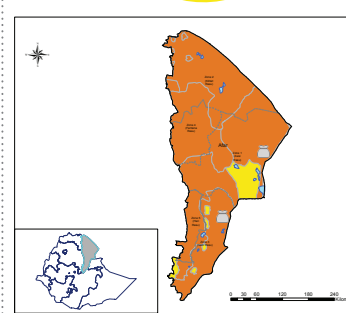
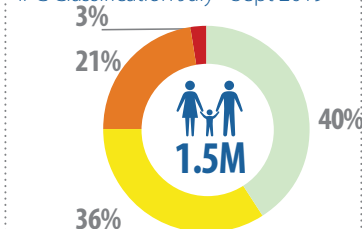
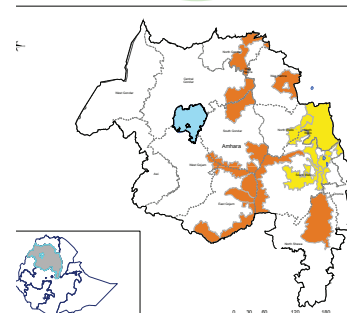
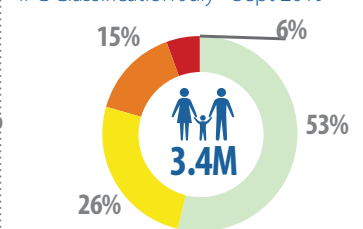
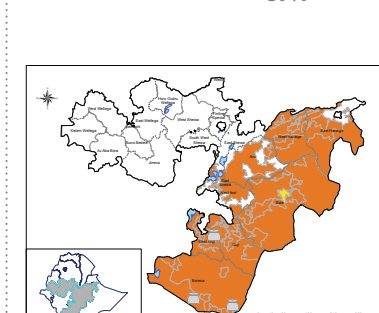
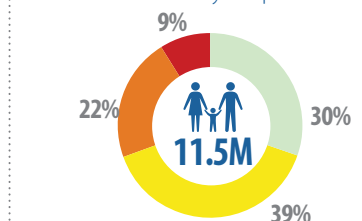
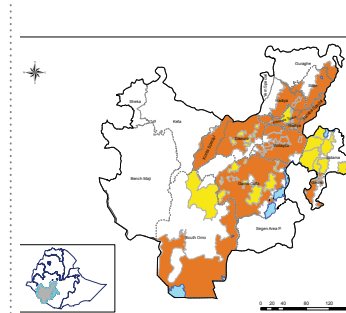
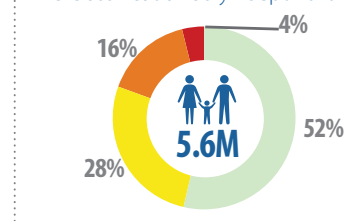
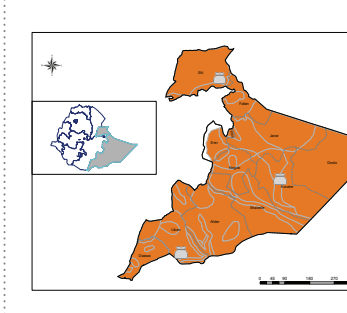
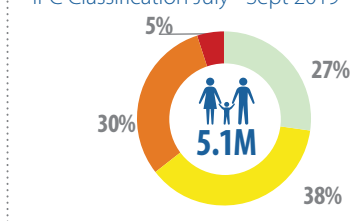
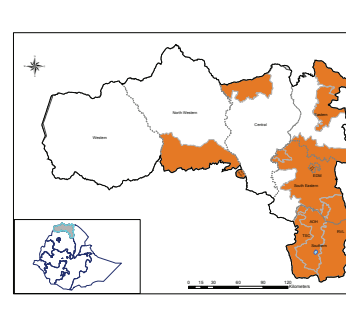
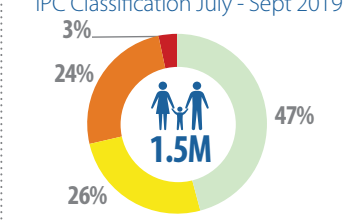
More than 6.7 million people are expected to be in Crisis (IPC Phase 3) or worse from October 2019 to January 2020



Projection: Acute Food Insecurity | Feb - June 2020



More than 8.4 million people are expected to be in crisis (IPC Phase 3) or worse from February to June 2020

Afar Region
IPC Classification July - Sept 2019Amhara Region
IPC Classification July - Sept 2019Oromia Region
IPC Classification July - Sept 2019SNNP Region
IPC Classification July - Sept 2019Somali Region
IPC Classification July - Sept 2019Tigray Region
IPC Classification July - Sept 2019

IPC Analysis Partners:

The Ethiopia IPC Food Security Analysis: The analysis by over 20 partner organizations including regional authorities and three federal government ministries was conducted in Afar, Amhara, Oromia, the Southern Nations Nationalities and Peoples (SNNP), Somali and Tigray regions. The key partners involved in this analysis included AAH, CSA, ENCU, FAO, FEWSNET, Ministry of Agriculture and Livestock Resource, NDRMC (Including regional Level), OCHA, Regional Bureau of Agriculture and Natural Resource, Regional Bureau of Health, Regional Bureau of Water and Energy, Regional Livestock Bureau, SCI, UNICEF and WFP. The analysis was then vetted by the Ethiopia IPC Technical Working Group in conjunction with a technical support team from IPC GSU and RSU.