

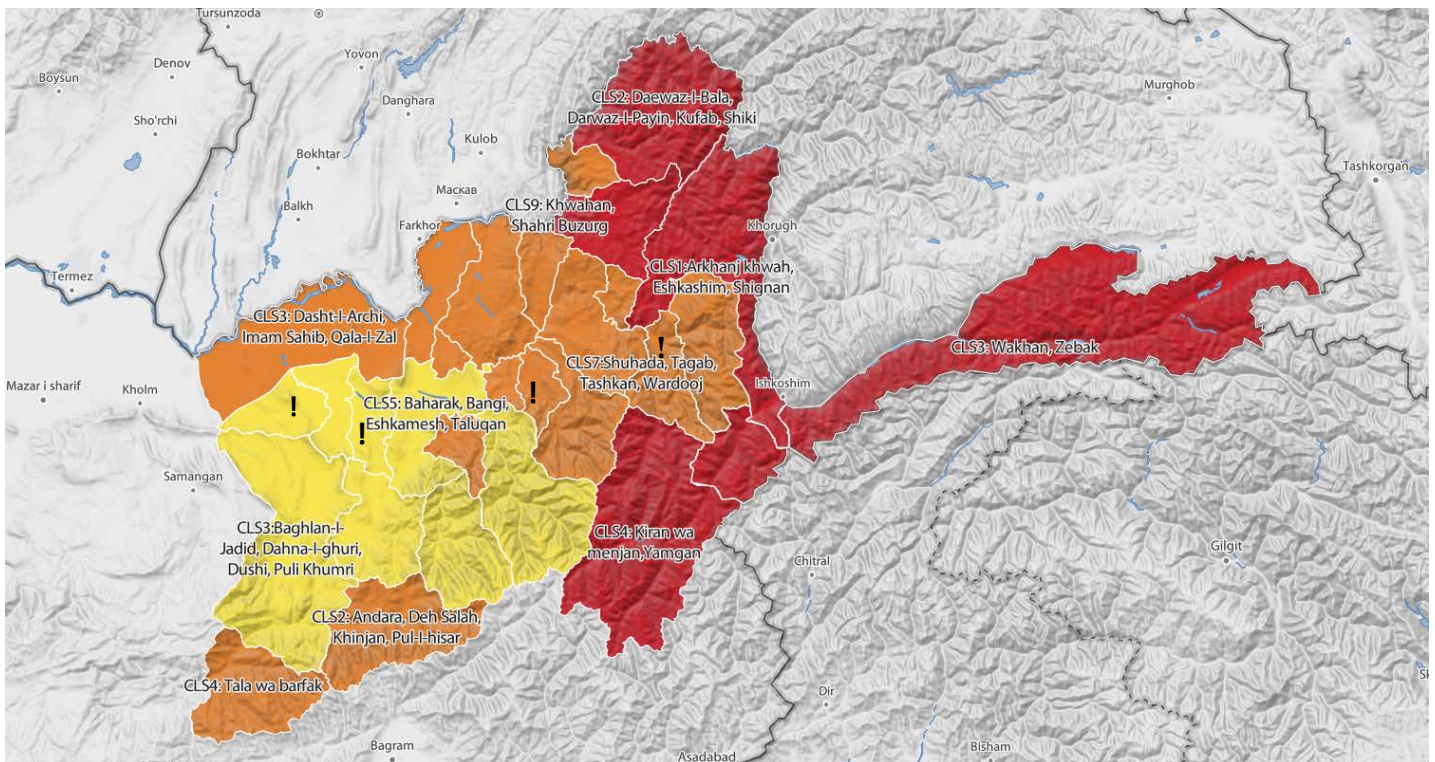


Integrated Food Security Phase Classification- Afghanistan
Acute Food Insecurity Situation Overview for North East Region
Current (Nov 2017-Feb 2018)

Created on
 February 2018

HIGHLIGHTS - IPC Acute Food Insecurity Situation for North- Eastern Region Afghanistan:

- During post-harvest situation of 2017, overall 33% of the population are classified to face “Crisis” (IPC phase 3) and “Emergency” (IPC phase 4) situation in the North Eastern Region covering Badakhshan, Baghlan, Kunduz and Takhar provinces.
- Kohistan, Raghistan, Yawan, Koran o Minjan, Yamgan, Darwaz Bala, Darwaz Payin, Kufab, Shiki, Wakhan, Zebak, Arghanj Khwah, Eshkashim, Shighnan districts of Badakhshan province are the most food insecure districts with 30% to 45% food insecure households, corresponds to 120 293 people in emergency situation (IPC phase 4).
- Badakhshan is the most vulnerable province in terms of food insecurity including 5 clusters (14 districts) classified in emergency situation (IPC phase 4) due to limited food availability in the market, poor access and utilization of food, displacement due to conflicts and remoteness of some districts especially in Darwaz, 3 districts that have no road connection from Afghanistan. Other causes are the road blockage in 12 districts of Badakhshan province for up to 6 months due to heavy snow, mountainous landscape and bad road condition.
- Kunduz province was partially under control of government last year with high conflict and insecurity rate, which caused displacement of 39000 individuals to centre of Kunduz and neighbouring provinces.
- Residents of Takhar have suffered from low level of water for irrigation where bad road condition is also one of the reasons for challenging food availability. Insecurity in some districts of this province caused displacement of 8100 individuals.
- On-going conflicts, natural disaster, decreased level of water, limited market functionality, remoteness of some areas in this region are the major contributing factors which has caused displacement, unemployment, depletion of livelihood assets and conducive the people to engage in irreversible coping strategies.



Phase 1 - Minimal	Phase 2 - Stressed	Phase 3 - Crisis	Phase 4 - Emergency
More than four in five households (HHs) are able to meet essential food and non-food needs without engaging in atypical, unsustainable strategies to access food and income, including any reliance on humanitarian assistance.	Even with any humanitarian assistance at least one in five HHs in the area have the following or worse: Minimally adequate food consumption but are unable to afford some essential non-food expenditures without engaging in irreversible coping strategies.	Even with any humanitarian assistance at least one in five HHs in the area have the following or worse: food consumption gaps with high or above usual acute malnutrition OR Are marginally able to meet minimum food needs only with accelerated depletion of livelihood assets that will lead to food consumption gaps.	Even with any humanitarian assistance at least one in five HHs in the area have the following or worse: large food consumption gaps resulting in very high acute malnutrition and excess mortality OR Extreme loss of livelihood assets that will lead to food consumption gaps in the short term.

Contact for Further Information: ipc@fao.org

Classification of severity of acute food insecurity conducted according to the IPC Protocols. This analysis has been made possible with the technical and financial assistance received from EU, WFP, & FSAC under the Direct technical supervision of Directorate of Statistics of MAIL.



KEY DRIVERS and CONSEQUENCES OF THE SEVERE ACUTE FOOD INSECURITY

- Acute food insecurity in northeast region for current post-harvest situation resulted from high level of poverty, generating further vulnerability to food insecurity, lack of employment opportunities or more specifically under employment, high insecurity; limited market functionality that has negative impact on food prices; deteriorating purchasing power of the poor especially the unskilled wage labourers, lower resilience of disaster affected populations; and serious erosion or depletion of livelihood assets. Meanwhile, livestock distress sales, lack of extension services and poor access to fodder facilities are the main concerns for the higher altitude areas.
- Northeast region of Afghanistan have been affected by conflicts that caused huge displacements of people within and out of the provinces Kunduz with 39,000 individual conflict IDPs is on the top, followed by Baghlan with 22,000, Badakhshan with 10,300 and Takhar with 8,100 individual IDPs (as per OCHA CAP/IDP Snapshot Jan-Dec 2017). Huge displacements have resulted in an extensive breakdown of livelihoods and very limited institutional capacity to respond to or prepare for food security and nutrition crises.
- OCHA's Recent assessments indicate that more than a third of children have been exposed to psychological distress due to loss of family and community members, and the constant risk of death and injury - with this being as high as 68 percent in Kunduz. Conflict affected and returnee populations are also more likely to adopt negative coping mechanisms such as early and forced marriage, child labour, and family separation. They are also likely to be exposed to domestic and sexual violence and, even secondary and multiple displacements.
- The impact of conflict on food security is more dramatic than the direct impact of war, because the recent instabilities caused ban of all supplies – including humanitarian assistance – to Warduj and Yomgan districts of Badakhshan province by the ALPs, which is used as a mean of pressure on AGEs, but the negative impacts of this kinds of decisions are suffered by the local unarmed people and increases their food insecurity and vulnerability. On the other hand, AGEs are using this ban as an excuse to target humanitarian supplies or personals that further limits access of government or humanitarian assistance organizations and increases issues for the most vulnerable and needy people in the areas controlled or influenced by AGEs.
- Imported goods through Tajikistan and organization of joint border markets play a vital role in food availability and access dimensions of food security in northeast region. Sher Khan Bandar in Kunduz is one of the main import/export points of the country and the bridges on Amu River are the key supply routes for the remote districts of Badakhshan province. Deteriorated security situation have caused time-to-time closure of the borders and border markets that result to limited availability and high prices of commodities in the concerned areas.
- Lack of access to improved sources of drinking water, sanitation and health facilities also lack of access to diversified food commodities, especially during the winter time, poor food practices and poor financial access are among the major driving factors of food insecurity in northeast region of the country.
- The analysis of the flood data highlighted that the areas most at risk of experiencing severe flooding are located in the Northeast and Eastern regions of the country, particularly Badakhshan, Takhar, Kunduz and Baghlan. In the north-east (Badakhshan), higher elevation and mountainous terrain, narrow valleys and sandy soil structure covered with snow during winter make it prone to flood during quick snow melts and during the rainy season, while in the flat areas rivers flood surrounding areas when the volume of water increases. Badakhshan is very susceptible to landslides due to rampant soil erosion and land degradation.
- Every year, mostly during spring season (March), landslides destroy houses, agricultural lands and community assets. Deforestation, animal overgrazing, cutting of trees and uprooting shrubs for cooking and heating fuel is further causing soil erosion and triggering landslides, debris flow and falls. The drought analysis highlighted that the areas most affected were Badakhshan and Baghlan provinces in the Northeast region. The soil erosion propensity analysis highlighted that once again the Northeast region appears to be the one with the highest erosion propensity (Badakhshan), as well as the Eastern region (Kunar, Laghman, Nangarhar, Nuristan provinces. (ICA 2016 report).
- Remoteness of Badakhshan districts - especially 3 districts of Darwaz that have no road from Afghanistan - road blockage in 12 districts up to 6 months every year due to cold climate, mountainous landscape and poor road infrastructure – increased insecurity that hamper access of people to their livelihoods assets, as well as, limits the access of humanitarian and development actors to the needy people, high food prices, deficit in grain (wheat) production, rain-fed lands and limited irrigated lands, limited food diversity, proneness to natural hazards, high number of IDPs due to conflicts and natural hazards and fast loss of natural resources, high poverty, high food insecurity (both chronically and acute), limited wage work availability and employment opportunities, limited access to markets and other basic services such as health, WASH and educational facilities, human, livestock, crop and orchard diseases combine the key drivers and immediate causes of high food insecurity in Badakhshan province that IPC outcomes indicate 14 districts of the province in Emergency situation (phase 4).



RECOMMENDATIONS FOR POLICY AND DECISION MAKERS

- Ministry of Agriculture, irrigation and livestock is the pioneer in the IPC process in Afghanistan; it is recommended that MAIL should take leading role in the publication of IPC analysis to other food security players in the country.
- Northeast region and particularly Badakhshan with 14 districts in IPC Phase 4; are vast provinces with many remote and inaccessible districts (both due to mountainous landscape and/or security). Majority of the humanitarian organizations (both UN agencies and NGOs) are working around the provincial capitals or in districts that are easily accessible and have less security and/or geographical constraints. Therefore, it is highly important to give more focus to the causes of food insecurity in remote and hard-to-access areas in order to decrease the vulnerability and food insecurity of people living in those areas.
- Considering the chronic food insecurity reaching emergency threshold each year in Badakhshan, needs government attention to tackle the root causes of food insecurity and to implement development activities, which are needed to take people out of poverty and chronic food insecurity.
- Based on MAIL data in 2017, Badakhshan and Takhar provinces suffered poor production of wheat. In years of poor production, without commercial imports and food aid, food prices have increased significantly and a majority of people in Badakhshan would not be able to afford the high food prices. In other words, most of the people benefit from affordable food prices. Otherwise, their food security situation deteriorates immediately which leads to increased malnutrition especially among children and pregnant and lactating women. These factors require immediate attention of government and humanitarian organizations, specifically for the upcoming lean season.
- Low food production, limited access to fruits and vegetables, improper practices in food preparation, lack of appropriate cooking utensils, limited access to WASH and health facilities, illiteracy, limited access to immunization services, unsafe sources of drinking water and diseases are the most significant factors of poor utilization in North-eastern province. Since overcoming these issues are beyond the capacity of local people due to poor economic condition, they require multi-sectoral efforts, high budget allocation and attention to meet the immediate to mid-term need. However, food security actors should assist people by doing more activities of DRR, asset creation, supplementary feedings, distribution of blended food, and through food fortification, in order to improve food security, strengthen resilience and prevent high prevalence of SAM and MAM.
- But the emergency assistance for the sever food insecure population classified in phase 3 or higher, urgent actions are required to protect livelihoods, reduce food consumption gaps and reduce acute malnutrition in each of the concerned areas.
- Shelter, access to improved water source and sanitation facilities is a concern for returnees and IDPs and part of the permanent resident households to be taken care of.
- Except Takhar province, the other three provinces of Northeast region are lacking updated information about nutrition status, therefore conducting SMART nutrition surveys are essential to highlight the situation of the people and address the issue more appropriately.
- Considering the Emergency situation (Phase 4) in 14 districts of Badakhshan province and high number of districts with crises situation (Phase 3) in northeast region; Afghanistan Food Security Steering Committee and the national Food Security and Agriculture Cluster (FSAC) should conduct a verification assessment to the areas of concern, in order, to find out the main causes of concern and indicate proper solutions to overcome the issue. Partners on the ground have committed to support the verification team with administrative, logistic and/or programme related needs.

NEXT STEPS FOR ANALYSIS, MONITORING AND UPDATES

- Ministry of Agriculture with its core partners needs to monitor the situation very closely for the upcoming drought alerts.
- In order to reflect the upcoming 4 months situation, IPC TWG with IPC regional technical working group member should proceed with projection of situation.
- Lack of nutrition data for such type of assessment and IPC analysis at district level was a major concern; to strengthen the process nutrition cluster members would be highly appreciated to have nutrition data for upcoming similar events.
- To differentiate the chronic and acute causes of food insecurity in north east region of the country, its highly recommended to roll out chronic food insecurity analysis during 2018 to inform humanitarian and development programmes on time.



Population Estimate

Population Estimate

Slno	Province	Cluster	Districts	Total Pop.	Phase 1 Minimal		Phase 2 Stress		Phase 3 Crisis		Phase 4 Emergency		IPC Phase 3+ Pop.	IPC Phse 3+ %
					Pop.	%	Pop.	%	Pop.	%	Pop.	%		
1	Bada ksh an	1	Arkhanj khwah, Eshkashim, Shignan	60,989	3,049	5	30,495	50	9,148	15	18,297	30	27,445	45
		2	Daewaz-I-Bala, Darwaz-I-Payin, Kufab, Shiki	103,632	10,363	10	20,726	20	36,271	35	36,271	35	72,542	70
		3	Wakhan, Zebak	24,050	3,608	15	6,013	25	6,013	25	8,418	35	14,430	60
		4	Kiran wa menjan, Yamgan	37,188	1,859	5	6,322	17	13,760	37	15,247	41	29,007	78
		5	Kohistan. Raghistan, Yawan	93,468	9,347	10	14,020	15	28,040	30	42,061	45	70,101	75
		6	Argo, Darayim, Khash, Yaftal-I-sufia	243,463	68,170	28	65,735	27	73,039	30	36,519	15	109,558	45
		7	Shuhada, Tagab, Tashkan, Wardooj	120,615	37,391	31	28,948	24	36,185	30	18,092	15	54,277	45
		8	Baharak, Jurm, Kishm, Faiz Abad	226,788	22,679	10	102,055	45	68,036	30	34,018	15	102,055	45
		9	Khwhan, Shahri Buzurg	72,642	21,793	30	18,161	25	21,793	30	10,896	15	32,689	45
2	Baghli an	1	Firing wa gharu, Gozargah-I-Noor, Khost wa firing	97,706	45,922	47	36,151	37	11,725	12	3,908	4	15,633	16
		2	Andara, Deh Salah, Khinjan, Pul-I-hisar	121,855	14,623	12	45,086	37	48,742	40	13,404	11	62,146	51
		3	Baghlan-I-Jadid, Dahna-I-ghuri, Dushi, Puli Khumri	541,180	189,413	35	248,943	46	81,177	15	21,647	4	102,824	19
		4	Tala wa barfak	31,861	7,647	24	8,602	27	14,337	45	1,274	4	15,612	49
		5	Burka, Jalga, Nahreen	153,792	49,213	32	76,896	50	23,069	15	4,614	3	27,683	18
3	Kunduz	1	Ali Abad, Kunduz	381,226	163,927	43	152,490	40	34,310	9	30,498	8	64,808	17
		2	Char Darah, Khan Abad	222,743	84,642	38	98,007	44	37,866	17	2,227	1	40,094	18
		3	Dasht-I-Archi, Imam Sahib, Qala-I-Zal	376,004	169,202	45	116,561	31	63,921	17	26,320	7	90,241	24
4	Takar	1	Farkhar, Warsaj	89,490	19,688	22	53,694	60	8,949	10	7,159	8	16,108	18
		2	Darqd, DashtQala, Khwjabahwdin, Khwajaghr, Yangi	204,765	30,715	15	61,430	30	81,906	40	30,715	15	112,621	55
		3	Chahab, Rustaq	256,999	20,560	8	102,800	40	115,650	45	17,990	7	133,639	52
		4	Hazar Sumuch, Kalafgan	51,692	7,754	15	15,508	30	23,261	45	5,169	10	28,431	55
		5	Baharak, Bangi, Eshkamesh, Taluqan	371,986	111,596	30	204,592	55	37,199	10	18,599	5	55,798	15
		6	Chal, Namak Ab	42,643	6,823	16	11,514	27	17,057	40	7,249	17	24,307	57
Grand Total				3,926,777	1,099,982	28.0	1,524,747	38.8	891,453	22.7	410,594	10.5	1,302,048	33.2



WORST AFFECTED DISTRICT /CLUSTERS PROFILE

Overall, all 67 districts were analysed during the IPC analysis for north eastern region of the country, in order to highlight the worst affected districts in each cluster, following brief description are provided as justification after the technical consensus among the technical working group members. Further detailed information for each cluster would be available through online ISS (IPC Information Support System) at <http://iss.ipcinfo.org/af/analysis/12172609/show>

BADAKHSHAN

Cluster 1 (Arghanj Khwah, Shighnan & Eshkashim)

This cluster is classified in emergency (phase 4) based on the key evidences, 78% of households reported poor food consumption with 21.3 % borderline while 26.1 % having high or distress coping mechanisms. Almost all of the households faced huge increase in food prices during last year and the main cause of prices increase is having limited access to other parts of the country by road.

More than half (58.33) % of farmers do not have access to seed and fertilizer markets while 41.67% of farmers have access to improved seed but purchasing power is low, whereas, 25% of the of the residents rely on farming. Districts in this cluster are remote and located in high altitude, therefore transportation is costly. In addition the opportunities for cash income are limited. Commodity prices are set non-competitive as well as land productivity is poor and opium addiction has caused economic distress.

Cluster 2 (Darwaz-I-Bala, Darwaz-I-Payin, Kufab, Shiki)

This cluster is classified in emergency (phase 4) based on the key evidences, 49.2% of households have been reported poor food consumption with 44 % borderline while 67.6% of households are having high coping strategies. High percentage of people in this cluster has faced huge increase in food prices during last year and the main cause of prices increase is that the four districts of (Darwazha) have serious road access issue up to 6 months due to heavy snowfall, mountainous landscape and bad road condition. Average land size in this cluster is (2.2 jerib) and as the mentioned districts are remote and located in high altitude so transportation is costly, opportunities for cash income are limited, commodity prices are set non-competitive and land productivity is poor.

Cluster 3 (Wakhan, Zebak)

This cluster is classified in emergency (phase 4) based on the key data evidence from the ground which shows that 46% of households reported poor and 38.3% with borderline food consumption. Almost all of households faced unusually large increase in food prices during last 12 months. Physical access to these districts is limited in winter due to road blockage, so the main reason of price increase is lack of road access to the major markets, provincial headquarter and the rest of the country. More than 90% of the farmers in this cluster do not have access to improved seed and fertilizer markets. As the districts are remote and located in high altitude, therefore transportation is costly, opportunities for cash income is limited, commodity prices are non-competitive and land productivity is poor and opium addiction has caused economic distress.

Cluster 4 (Kiran o minjan, Yamgan)

This cluster is classified in emergency (phase4) based on the key data evidence from the ground which shows that 47.2% of households reported poor and 45.5%with borderline food consumption. In this cluster 37% of people do not have access to school education while 16% of people have only primary education. More than 40% of the households are using non improved sources of water including river water. Moreover 20% of the households are feeling very insecure since Yomgan district is controlled by AGEs and the route to Kiran o Minjan is under control of AGEs. Prices are very high and non-competitive.

Availability of diversified food commodities is very limited and 83% of farmers do not have access to improved seeds and fertilizers. No stability in any of the food security elements has caused high food gaps, resulted to very poor food consumption, and forced people to apply distressed coping strategies.

Cluster 5 (Kohistan, Raghistan, Yawan)

This cluster is classified in emergency (phase 4) based on ground data 91.67% of households faced unusually large increase in food prices during last 12 months, the reason behind this is that 70.83% of households have lack of access to the major markets due to bad condition or blocked roads.74.8% of population in these districts have poor food consumption. Lack of access to markets, as the local products are not sufficient.

Limited access to health facilities, atypical geographical condition and lack of agricultural land could be the main reasons for that. Meanwhile people are applying high coping strategies in the mentioned cluster, as most of the people sell their livestock, agricultural land to cope with on-going situation.



BAGHLAN

Cluster 2 (Andarab, Deh salah, Khinjan, Pul-i-hisar)

This cluster is classified in crisis (phase 3). That 72.2% of the people have faced unusual large increase in food prices during the last 12 months, the main reasons of prices increase was lack of access to the major markets and bad/blocked road conditions. Limited supply and not having enough irrigation water for agriculture in these districts could also contribute to worsening the food security situation, while most of the population in this cluster has access to agriculture land, seeds and fertilizer. Furthermore, there has been a slight decrease on the people's cereal stocks. Meanwhile high numbers of households are using river water as their main source of drinking water.

TAKHAR

Cluster 2 (Darqad, Dasht-e-Qala, Khwaja Bahuddin, Khwaja Ghar, Yangi Qala)

This cluster is classified in phase 3 (crisis) which is the most insecure area in Takhar province, it is consisted of Darqad, Dasht e qala, Khawaja ghar, Khawaja bahudin, Yangi Qala. Access to market is limited in different seasons of the year for this cluster due to presence of armed fractions which is reported 64%. Low precipitation caused low water level and converted the irrigated lands into rain-fed and eventually to no cultivation in these areas. Based on ground evidence 16.8% of households reported poor food consumption with 43.2% borderline while 12% are using high coping mechanism. IDPs influx to Khwaja ghar and darqad districts affected the livelihood of displaced and the host communities.

Cluster 4 (Hazar Samuch, Kalafgan)

This cluster is classified in phase 3 (crisis) due to low precipitation and much dependency on irrigated lands, residents of this cluster have faced decrease in agriculture production and has experienced high increase in food prices, meanwhile the supply does not meet the demand and the main reason of price increase is lack of major markets. Based on the key data evidence from the ground which shows that 65.5% of households reported poor and 26.5% with borderline food consumption mean while 48.6% of households are using high and medium coping mechanisms.

Cluster 6 (Chal and namak Aab)

This cluster is classified in crisis (phase 3) with high population percentage 17% in phase 4, based on the key data evidence, 29.2% of households reported poor food consumption with 57.6% borderline while 18.8% having high coping mechanisms. People in this cluster has experienced high increase in food prices, meanwhile the supply does not meet the demand. Agriculture water level is low in this cluster with poor harvest and there are tensions arising from using the irrigation water to agriculture also pastureland which has caused conflict. Almost all the agriculture land is rain fed and due to no precipitation, the production has decreased which cause decrease in cereal stock compare to last year. Access to market is limited or stopped in winter. This cluster is moderately secure and there is no communal storage facility available in this cluster for farmers.

KUNDUZ

Cluster 1 (Ali Abad)

In spite of that Kunduz is one of the best provinces of the Afghanistan in terms of food production, unfortunately certain districts have been affected negatively from insecurity incidents last year. Meanwhile, recent food security and livelihood assessment showing sever food insecurity situation in cluster 1 of this province with having almost 66% of poor and borderline food consumption, where almost 28% of them are experiencing purely poor food consumption during post-harvest situation. However, better of households who are farmers will be taking good harvesting, almost 96% of them do not have access to communal storage facilities which is resulting to sale products in lower prices. Almost 23% of the population used crisis coping strategies and 23% of the population utilized stress ones. Considering the humanitarian assistance and social economic condition, this area would be classified in phase 2 of the IPC, but without those on time assistance situation might go to worsen food insecurity situation.

Cluster 3 (Dasht archi, imam sahib, qala-e- zaal)

This cluster is classified in Crisis (phase 3) based on the key data evidence, 52.4% of households reported poor food consumption with 38.2% borderline while 17.1% having high coping mechanisms. Almost 47% of the households use their own production and sales as their main source of income while they have not faced any difficulty during harvest time. Considering the outcome indicators almost 17% of the populations in this area are marginally able to meet minimum food needs only with accelerated depletion of livelihood assets that will lead to food consumption gaps where majority of the IDPs could be considered in this phase especially in Imam Sahib district, ongoing conflicts and high rate of insecurity also considerably affected the food security situation in this cluster. High numbers of households have faced huge increase in food prices during last 12 months and the Main reason for unusual large increase in food prices was poor harvest, limited supply to meet the needs of growing population and lack of access to foreign markets.



THE PROCESS AND METHODOLOGY

The Integrated Food Security Phase Classification (IPC) is a set of tools and procedures to classify the nature and severity of food insecurity for decision support. The IPC is a multi-stakeholder process based on broad technical consensus, convergence of evidence, accountability, transparency, and comparability across unit of analysis, countries and over time. The IPC classifies areas with acute food insecurity into five phases; Minimal, Stressed, Crisis, Emergency and Famine, with each phase aligned with conforming response objectives.

Ministry of Agriculture, Irrigation and livestock is determined to provide accurate information for all partners in terms of food security with cordial support of all stakeholders. In order to guide the decision makers for their strategic interventions since 2012 Afghanistan is applying the IPC acute analysis at the provincial level. After the successful compilation of IPC acute food insecurity analysis in 2016 and 17 and IPC district level acute food insecurity analysis in eastern region of the country, followed by comprehensive technical consensus among key stakeholders & vital role of Food Security and Agriculture Cluster (FSAC), there was huge demand from government and other stakeholder agencies of knowing the food security situation at the district level to target the exact most vulnerable population of concerned areas.

For the second time after east region district level IPC analysis, north eastern region of the country is analysed in terms of food security and livelihood under direct supervision of Ministry of Agriculture Irrigation and Livestock (MAIL), with technical assistance from WFP and EU-MAIL Transition project.

To work efficiently and have representative data, Afghanistan assessments technical working group decided to form clusters of districts that will be comprised of 1-5 districts in each province with similar livelihood zones and geographical location, accordingly 23 clusters were established in four provinces of north-eastern region for IPC analysis.

On 26 of Jan 2018, the IPC acute analysis workshop for northeast region of the country was called where more than 40 members of the IPC community organizations participated. First day of the workshop was started with a refresher training, which IPC level 2 certified trainers and member of IPC secretariat facilitated. Remaining 3 days were allocated to do the IPC analysis based on IPC global standards. IPC regional support unit was involved from beginning of the workshop till end where they had provided extensive support in terms of data analysis and data preparation.

In addition to the IPC technical working group members, participant from MAIL/DAIL, WFP, UNFAO, FSAC, FEWSNET, RF, NAC, ACTED, FOCUS/AKAH, Kabul university IDS/H, SFL, SYIB-AF and Civil society activists participated.

MAJOR DATA SOURCES FOR IPC NORTH EASTERN REGION ANALYSIS 2018

S/N	Data Source
1	Food Security & Livelihood Assessment from North East region 2017
2	SMART Surveys 2017-ACF
3	Agriculture Production and Food Price – MAIL 2017
4	Land Cover Atlas-2010 MAIL-FAO
5	Population- CSO 2017
6	Food Price, ICA, Food Distribution - WFP 2017
7	Refugee & IDP data - UNHCR, OCHA, FSAC, IOM 2017
8	Natural disaster affected population – IOM, FSAC 2017

Contact for Further Information: ipc@fao.org

Classification of severity of acute food insecurity conducted according to the IPC Protocols.

This analysis has been made possible with the technical and financial assistance received from EU, WFP, & FSAC under the Direct technical supervision of Directorate of Statistics of MAIL.