

## OVERVIEW

The IPC Information Support System (ISS) is a new **innovative web-based application** that has been designed to facilitate global, regional and national stakeholders in creating, storing, and disseminating IPC analyses and information. The ISS simplifies the IPC analysis process by **digitizing the IPC tools** needed to implement the IPC four core functions: Building Technical Consensus; Classifying Severity and Causes; Communicating for Action; and Quality Assurance.

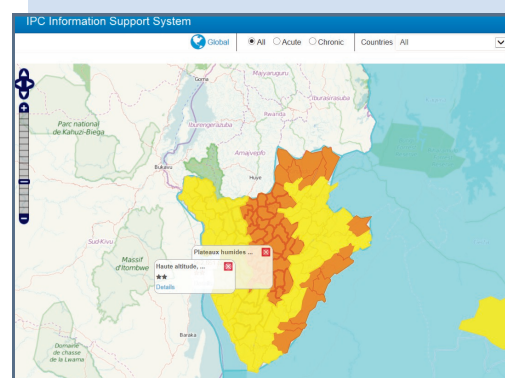
The ISS is easy to use because it mirrors the **IPC steps for conducting IPC Acute** and, more recently, **Chronic Food Insecurity Analysis** and it facilitates greater access to IPC analyses and results. The ISS platform consists of two entry points: the **country portals**, in the backend, owned and managed by IPC Country Technical Working Groups, and the **public interface** in the frontend, where users can see the IPC Acute and Chronic Food Insecurity Analyses validated and shared by countries.

In 2014, the ISS has also been developed for conducting **IPC Chronic Food Insecurity Analysis** and so far it has been utilized by the 8 countries that rolled out the IPC Chronic Food Insecurity Classification: Bangladesh, Burundi, El Salvador, Kenya, Nepal, Philippines, Zimbabwe and Uganda.

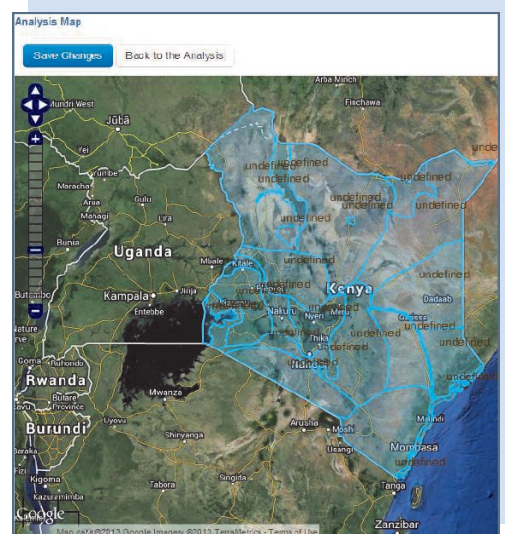
## ADVANTAGES

The ISS can facilitate the production of IPC Chronic and Acute Analyses in the following ways:

- **Enhances the quality** of the analysis by following a more structured tool.
- **Improves understanding** of the IPC because all tools are packaged in a software.
- **Reduces the time and cost** of the analysis as the ISS automates IPC tools and procedures including automating Communication Template creation.
- **Lessens reliance** on GIS experts by automatically creating the IPC map.
- **Increases transparency** by allowing technical partners and other stakeholders access to the analysis (where the country establishes permissions to do so).
- **Enables a historical database** of previous analyses per country.
- **Enables regional and global comparison** of national analysis on one screen
- **Improves public access** to country IPC analysis at the click of a button of the world map.



*Burundi IPC Current Acute Food Insecurity Analysis on the ISS public interface, Aug - Sep 2014*



*Example of IPC ISS Analysis Map, Kenya 2013*

## REQUIREMENTS FOR USAGE

The ISS was developed by the IPC Global Support Unit (GSU) for countries to produce IPC Acute and Chronic Food Insecurity Analyses. The online application is supported by the GSU until December 2015.

Countries who opt-in to the system maintain their own portal at no cost. The ISS is user friendly so that the same capacities involved in the IPC analysis are also used in the ISS

(analysts, peer reviewers, others). Minimal technical capacity is required as the system is **online and secure** against unwarranted users.

A country must nominate a System Admin, ideally someone from the Technical Working Group, who has basic IT skills to create user accounts and grant permissions. Analysts fill in the worksheets. A designated person completes the **Communication Template**.



*IPC ISS Somalia Country Homepage*

## DEVELOPMENT PROCESS

The ISS has been designed in 2012 to allow the **harmonization of IPC analyses between countries and regions** by the development of joint IPC **Communication Maps**. The purpose is to increase transparency and accountability, and enables historical review of IPC analyses conducted at national and regional levels.

The IPC Information Support System (ISS) for conduction IPC Acute Food Insecurity Analysis version was completed in March 2013.

From May to end June 2013, the ISS platform for IPC Acute Food Insecurity underwent further testing and modifications by using data from recent IPC analyses in Somalia and Uganda. Following the launch of the IPC Chronic Food Insecurity Classification in July 2014, the ISS has been enhanced to also conduct IPC Chronic Food Insecurity Analysis and is being used as an integral part of any IPC-Chronic roll-out.

Currently, **16 ISS country portals for IPC Acute and Chronic Food Insecurity**

**Analysis** have been created and are in use in English, French and Spanish. Additional languages will be considered upon request.

In all countries, IPC Technical Working Group (TWG) members have been asked to provide feedback on the ease of use of the ISS and the potential to improve quality of analysis due to the standardization of the forms.

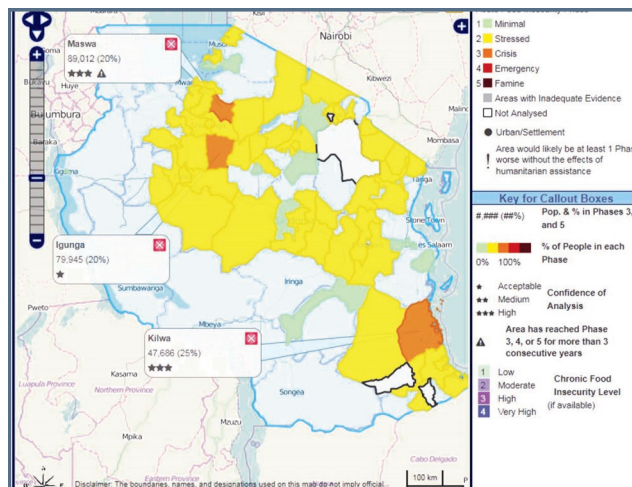
According to countries' experiences, ISS **simplified the data entry process** by automating certain processes, calculations, and steps such as the production of the Communication Template.

The IPC Global Support Unit is overseeing the development of the ISS which will be an **integral part of the IPC website** once fully deployed. Awareness of the ISS is being raised by global, regional, and national stakeholders, as well as via the numerous **IPC trainings** which will occur in the coming months.

## BUILDING CAPACITY ON ISS

To ensure users are able to utilize the ISS, an ad-hoc module on ISS has been incorporated into the IPC Level 1 Training. The module is available in English, Spanish, and French. Additionally, the advanced training for System Administrators, Level 2 trainers, and Regional Coordinators is also available in the same three languages.

The System Admin training is important to ensure countries can own and manage the portal. Each country expecting to implement the ISS should identify a person to support the IPC ISS process. This person would undergo the System Admin training in order to better support users and maintain the portal.



Communication Template Map - Tanzania Acute Analysis, December 2013 - April 2014

## IPC ISS Zimbabwe Analysis Overview Page

IPC Information Support System: Zimbabwe

AnalysisContactsReferencesAdministration

Analysis: Acute Analysis 2012

Overview

Details

BUILDING TECHNICAL CONSENSUS

Technical Working Group Matrix

CLASSIFYING SEVERITY AND CAUSES

Manicaland

Matabeleland north

Masvingo

Harare

Bulawayo

Mashonaland east

Mashonaland west

Matabeleland south

Mashonaland central

Midlands

COMMUNICATING FOR ACTION

Communication Template (Current)

Communication Template (Projected)

QUALITY ASSURANCE

TWG Self Assessment

Peer Review Assessment

Feedback (Current)

Feedback (Projected)

Title

Acute Analysis 2012

Analysis Date

7/6/2012

Is Current

☒

Current Period From

4/1/2012

To

4/30/2012

Is Projected

☒

Projected Period From

5/1/2012

To

12/31/2012

Add/Modify Analysis Areas (click map)

Administration

Partner Organizations

CARE

Remove

CRS

Remove

WFP

Remove

FAO

Remove

FEWSNET

Remove

OCHA

Remove

FOOD AND NUTRITION COUNCIL

Remove

MOAMID

Remove



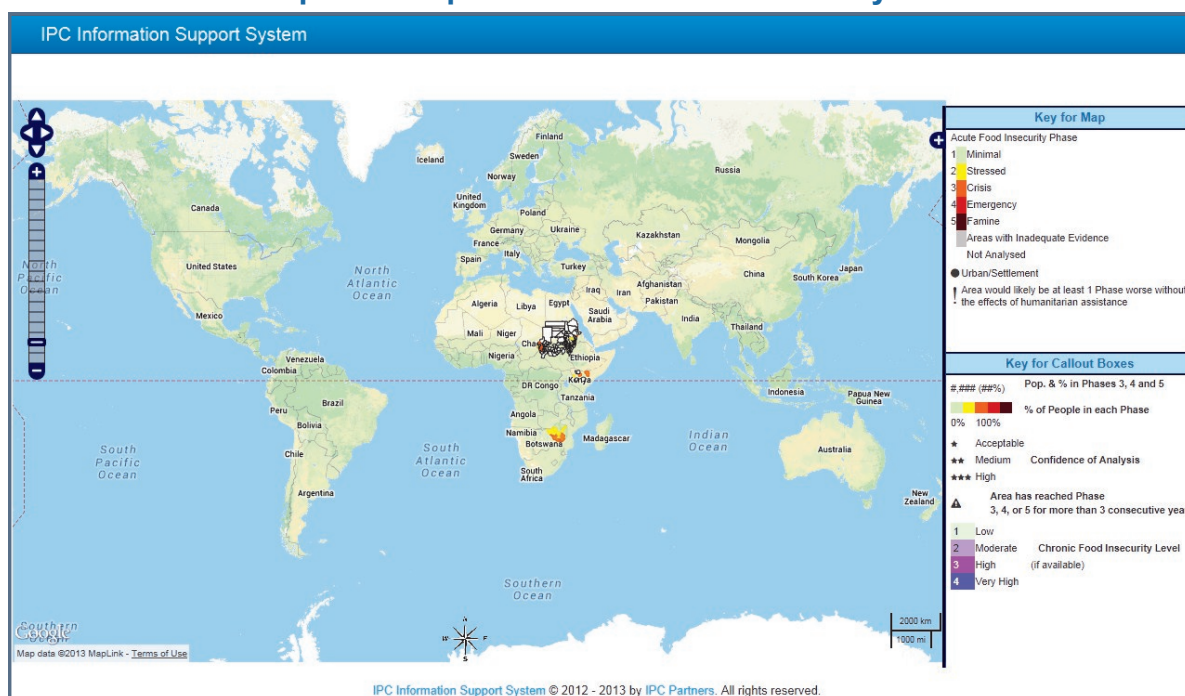
## PUBLIC ACCESS TO IPC ANALYSES

Countries can opt to utilize the ISS in 'private' mode, in which case it acts as an application accessible only to Country Technical Working Group members. In this situation, no data or information is publicly available. Alternatively, country focal people can decide to share IPC data for stakeholders by enabling public view of the Communication Template.

To view the publicly shared analysis, follow the link: <http://iss.ipcinfo.org/public/map>

The public map is 'clickable', meaning that it allows the user to click on analysis areas and see the pop-up box with more information.

### IPC ISS Global public Map and Database of IPC Analyses Worldwide



For more information on the IPC ISS please send an e-mail to: [iss@ipcinfo.org](mailto:iss@ipcinfo.org)

IPC Global Steering Committee Members:



\*The EC in the global partnership is represented by the Joint Research Centre of the European Commission

The IPC development and implementation is made possible by the support of:



The IPC has also benefited from the support of the governments of Australia, Canada, Germany, the Netherlands, Spain, and Sweden.

#### IPC GLOBAL SUPPORT UNIT

Viale delle Terme di Caracalla, 00153 Rome, Italy  
 Tel. +39 06 76 54899  
 E-mail: [ipcinfo@fao.org](mailto:ipcinfo@fao.org)  
 Skype: ipc.initiative  
[www.ipcinfo.org](http://www.ipcinfo.org)