



Evidence and Standards for Better Food Security Decisions

IPC IN YEMEN

IPC ALERT, ISSUE 7, 15 MARCH 2017

FOOD INSECURITY CONTINUES TO WORSEN- 17 million people in need of urgent assistance

Based on the Yemen IPC Technical Working Group results*:

HOW MANY & WHEN

- As of March and throughout July 2017, **17 million people are estimated to be in Crisis (IPC Phase 3) and Emergency (IPC Phase 4) and require urgent humanitarian assistance.** This corresponds to 60% of the population and represents a 20% increase compared to the results of the last IPC Analysis conducted in June 2016.
- Of particular concern is the **magnitude of food insecurity in Al Hodaidah and Taiz governorates**, where almost 2,23 million people are classified in Crisis (IPC Phase 3) and over 1,91 million people in Emergency (IPC Phase 4).

WHERE

Food insecurity levels are alarming across the country. Out of 22 governorates, seven governorates are in Emergency (IPC Phase 4) – Lahej, Taiz, Abyan, Sa’ada, Hajjah, Al Hodaidah, and Shabwah; ten governorates are in Crisis (IPC Phase 3) – Aden, Amran, Dhamar, Sana’a Governorate, Sana’a City, Ibb, Marib, Raymah, Al Mahwit, and Hadramout; and three governorates are in IPC Phase 3! - Al Jawf, Al-Dale’e, and Al Bayda – where “!” indicates that the area would have been in Emergency (IPC Phase 4) or worse without humanitarian assistance.

WHO

The economic crisis affects the whole society. However, the most affected populations remain the Internally Displaced Persons (IDPs) and the host communities affected by the ongoing conflict.

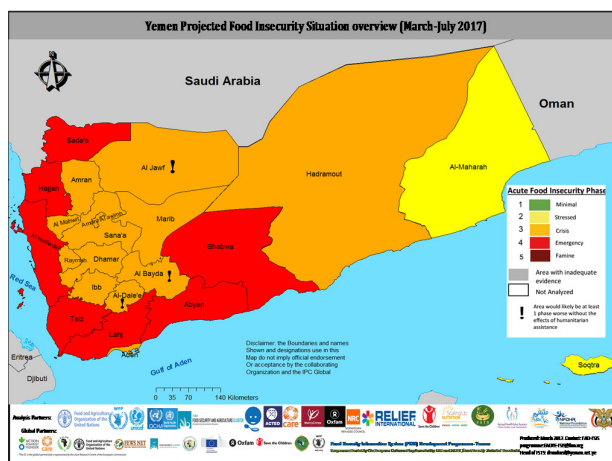
WHY

Conflict and insecurity continue to be the main drivers of acute food insecurity, with devastating effects on livelihoods and the nutrition situation. In conflict areas, restrictions and disruptions of commercial and humanitarian imports, mass displacements, loss of income, fuel scarcity and high prices, disrupted market systems, high food prices and the collapse of public services are aggravating the situation.

Acute malnutrition is a major outcome of the severe food insecurity and is at alarming levels. Four governorates (Abyan, Taiz, Al Hodaidah, and Hadramout) have Global Acute Malnutrition (GAM) prevalence above the WHO Critical threshold ($\geq 15\%$). Seven and eight governorates have GAM prevalence at serious levels (10-14.9%) and poor levels (5-9.9%), respectively.

ACTIONS NEEDED

- Scale up humanitarian assistance to save and livelihoods for the populations in Emergency (IPC Phase 4) and Crisis (IPC Phase 3), especially in the governorates where pocket areas of more severe food insecure populations may be present (i.e. some parts of Taiz and Al Hodaidah governorates). Advocacy and lobbying for humanitarian access and support to inaccessible districts is also urgently required.
- Advocate for the lifting of restrictions that limit importation of essential commodities and access to humanitarian services.
- Pursue the twin-track approach of providing humanitarian assistance, and side by side implementing activities that enhance livelihood resilience.
- Monitor food security and nutrition outcomes and humanitarian assistance; streamline assessment and analyses methods and ensure data collection at district level.



Yemen TWG IPC Map March-July 2017

The YEMEN IPC Process - The Yemen IPC Technical Working Group (IPC TWG) undertook the IPC analysis in late February 2017. 69 analysts from multiple agencies representing different governmental and non-governmental organizations, including UN agencies, resource partners, and NGO partners participated in the process. The Yemen IPC TWG requested a real time IPC Quality Review as an added quality assurance step in the validation process of the Yemen IPC Acute Analysis. The real time IPC Quality Review was led by the IPC Global Support Unit (GSU).

IPC Global Partners

Contact: Oic - IPC Global Programme Manager Sophie.Chotard@fao.org



*The EC in the global partnership is represented by the Joint Research Centre of the European Commission