



Evidence and Standards for Better Food Security Decisions

IPC IN SOUTH SUDAN

IPC ALERT, ISSUE 6, 20 FEBRUARY 2017

LOCALIZED FAMINE AND UNPRECEDENTED LEVELS OF ACUTE MALNUTRITION IN GREATER UNITY - almost 5 million people in need of urgent assistance

Based on the IPC South Sudan Technical Working Group results*:

HOW MANY & WHEN

- As of January 2017, 3.8 million were estimated in Crisis (IPC Phase 3), Emergency (IPC Phase 4) and Catastrophe (IPC Phase 5).
- As of February-April 2017, the number of people estimated in need of humanitarian assistance (IPC phase 3 and above) has increased to **almost 5 million, out of which 100,000 are facing famine conditions.**

WHERE

- The highest proportions of populations in Crisis, Emergency and Catastrophe are observed in **Northern Bahr el Ghazal (61%) and Unity (61%) States.**
- People facing famine or risk of famine are located in **Leer, Mayendit, Koch and Panyijar** counties of Unity State.

WHO

The most affected populations are **Internally Displaced Persons (IDPs)** who are dispersed and the **host communities** affected by the on-going conflict.

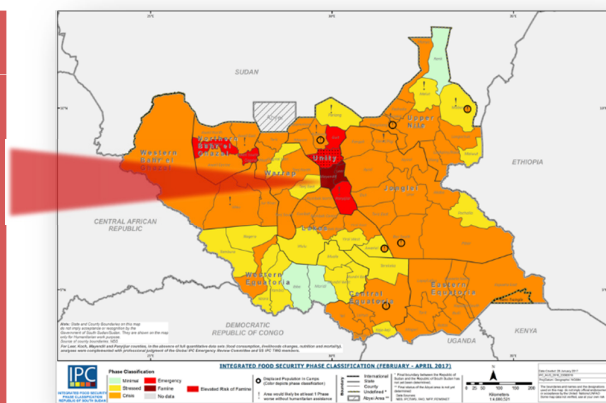
WHY

Conflict and insecurity are the main drivers of acute food insecurity compounded by the coming lean season and resulting in devastating effects on livelihoods and the nutrition situation. In conflict areas, humanitarian assistance has become people's main source of food and it is now insufficient to meet all their needs, mainly due to severe humanitarian access restrictions. **Acute malnutrition is a major public health emergency in the country.** Evidence shows that, in the Southern part of Unity State, one in three children is acutely malnourished. This represents an unprecedented situation requiring immediate action.

FAMINE DECLARATION

Famine is declared in Leer and Mayendit counties of Greater Unity State. Famine is likely to happen in Koch County and can be avoided in Panyijar County only if the humanitarian assistance is delivered as planned.

The South Sudan IPC Technical Working Group has reached these conclusions in consideration of all currently available data, including planned humanitarian response and based on the professional judgment of the IPC Emergency Review Committee (ERC) but not in full accordance with the minimal evidence requirements of the IPC standard protocols.



South Sudan IPC TWG IPC Map, Feb-July 2017

ACTIONS NEEDED

- Secure humanitarian access and ensure respect of humanitarian space in Leer, Mayendit, Koch and Panyijar counties, as further escalation of famine can only be prevented if humanitarian assistance is scaled up and reaches the intended beneficiaries;
- Urgent action is also required for the other severely food insecure areas of the country to protect livelihoods, reduce food consumption gaps and reduce acute malnutrition.
- Vigilance is needed for monitoring the evolving conflict as well as economic, political and seasonal situation and updating the IPC analysis in real time.

The SOUTH SUDAN IPC Process and next steps - The South Sudan IPC Technical Working Group (IPC TWG) undertook the IPC analysis at the end of January 2017. Due to the high levels of food insecurity and acute malnutrition prevailing in South Sudan, the IPC TWG requested the activation of the IPC Global Emergency Review Committee (ERC) to review the preliminary results. IPC ERC findings and conclusions were shared with the IPC TWG that has integrated and used the ERC review to reach final conclusions. The results were validated by South Sudan IPC TWG and officially endorsed by the National Bureau of Statistics of the Government of South Sudan. The South Sudan IPC TWG has planned to **update the IPC analysis in April, 2017.**

IPC Global Partners

Contact: Oic - IPC Global Programme Manager Sophie.Chotard@fao.org



*The EC in the global partnership is represented by the Joint Research Centre of the European Commission

*This Alert reflects the results validated by the South Sudan IPC Technical Working Group and officially endorsed by the National Bureau of Statistics of the Government of South Sudan. The full IPC results are available at this [link](#)