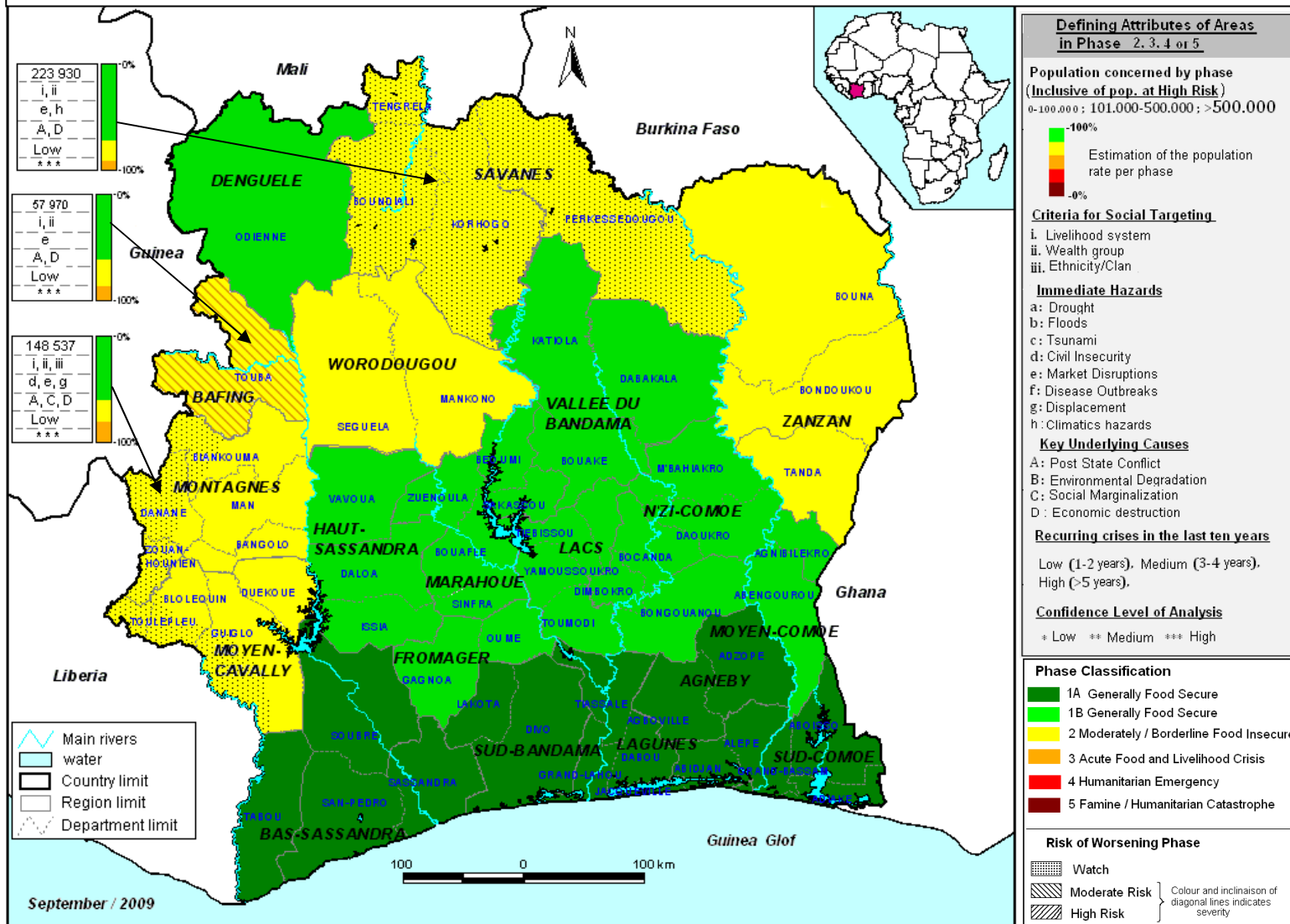


IPC in Côte d'Ivoire – 4th Analysis / September 2009



Explanation of the Map

1. **Context.** Since 1985 the poverty rate increased from 10% to 48.9% in 2008 (62.5% in rural areas). 12.6% of rural households are food insecure (EASA, 2009). The groups most affected are labourers and households who depend on subsistence agriculture. Food insecurity is primarily related to problems of access to quality food due to low purchasing power, poverty and lack of food diversification. The crisis has exacerbated the deterioration of households' living conditions, weakened their livelihoods and their ability to cope with shocks. Moreover, the adverse global environment, soaring food and production prices (continually high level in Côte d'Ivoire), decline in agricultural productivity, combined with structural problems in agricultural value chains have further deteriorated the living conditions of rural households.

2. The **current food security situation** according to the 5 IPC reference phases (Colour reminded in the legend) :

2.a. South, Center and Denguélé region (in the North West) are in Phase one. Some zones are Phase 1A where resilience is higher and poverty rates lower, and some others are in phase 1B where resilience is weak and poverty level higher;

2.b. North except Denguélé Region and West are in Phase two.

3. The **Risk of worsening phase** in the coming months (design reminded in the legend)

3.a. **Moderate Risk** of moving to Phase 3: *Bafing* region

3.b. **Watch** (simple alert):
 Region of Savanes, Guinean and Liberian borders (regions of *Bafing*, *Montagnes* and *Moyen Cavally*).

The Call-out box in the map highlights the main immediate and underlying causes of the situation. They lead to short and medium-longer term responses proposals. These proposed responses are detailed in a separate matrix.



USAID
FROM THE AMERICAN PEOPLE



Sida